



Contra Costa Health Plan

Medi-Cal Long Term Care Carve-in

Dennis Hsieh, MD, JD

November 1 & 2, 2022

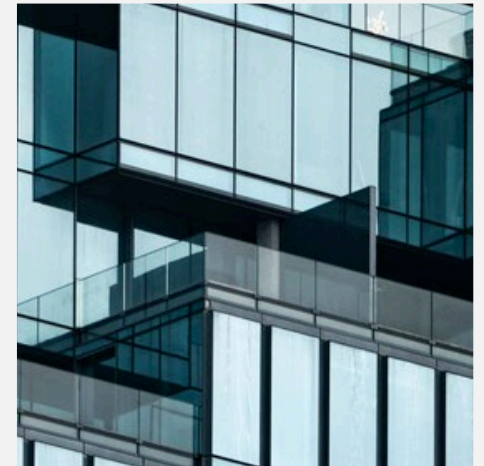
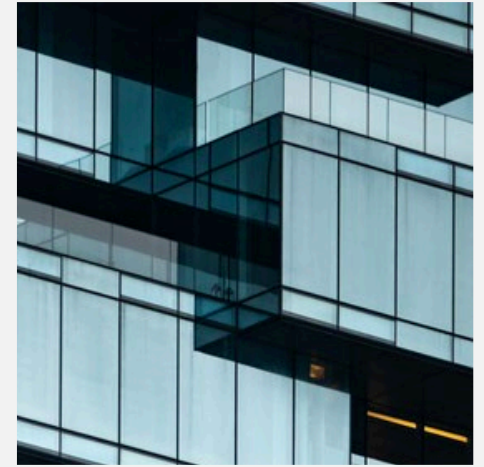


Welcome & Introductions



What is Long Term Care Carve-In?

- No disenrollment after month of and month after
- CCHP will remain the payor for services for Medi-Cal patients



What Does This Mean?

- Utilization Management: Regular concurrent review of all patients for:
 - Medical Necessity
 - Lower Level of Care
- Continuity of Care:
 - Must meet medical necessity
- Regular Case Conferences/Rounds with SNFs?



Transitions of Care

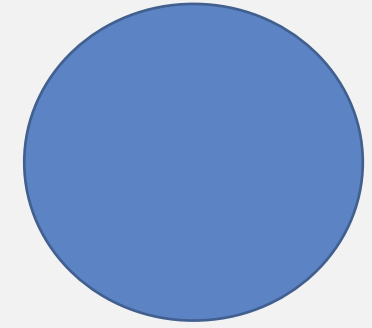
- CCHP Case Management or Enhanced Case Management Assigned
- Looking to move to lower level of care if clinically appropriate
 - Can member go to assisted living?
 - Can member go to home/medical respite/shelter or other housing?
 - California Community Transitions Program
 - Home and Community Based Waiver
 - MSSP (> 65 y/o)
 - Community Supports
 - CCHP will guarantee medical respite or post hospital stabilization housing if clinically appropriate
 - If member refuses, CCHP will no longer pay for services



Quality of Care

- DHCS looking at metrics around quality of care (readmissions, infections, etc.)
- What can CCHP do to help with quality metrics?





1. SNF MD staffing: What does this look like? (PCP vs contracted docs vs SNFists)
2. List of contracted MDs delivering care at the facility
3. What Rev code and accommodation code used to bill FFS.



Send the information to cchpcontracts@cchealth.org



- Nonemergency Medical Transportation (NEMT) for Medi-Cal
- Need to have “prescribing provider” sign the NEMT form
- Prescribing Provider = MD, DO, NP, PA, Podiatrist, Mental Health Clinician, Substance Use Disorder Clinician
- Printed name with credentials needs to be legible





What else can
CCHP do to
help?



CCHP SNF Contact:
CCHPSNF-Auth@cchealth.org

Escalation:
auth-umsupport@cchealth.org

Thank You!