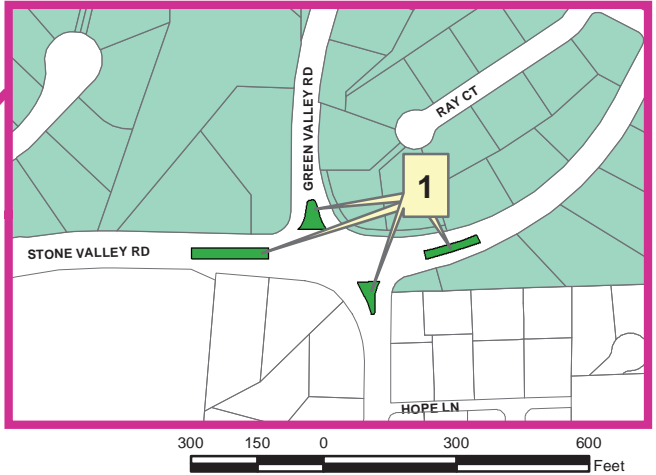
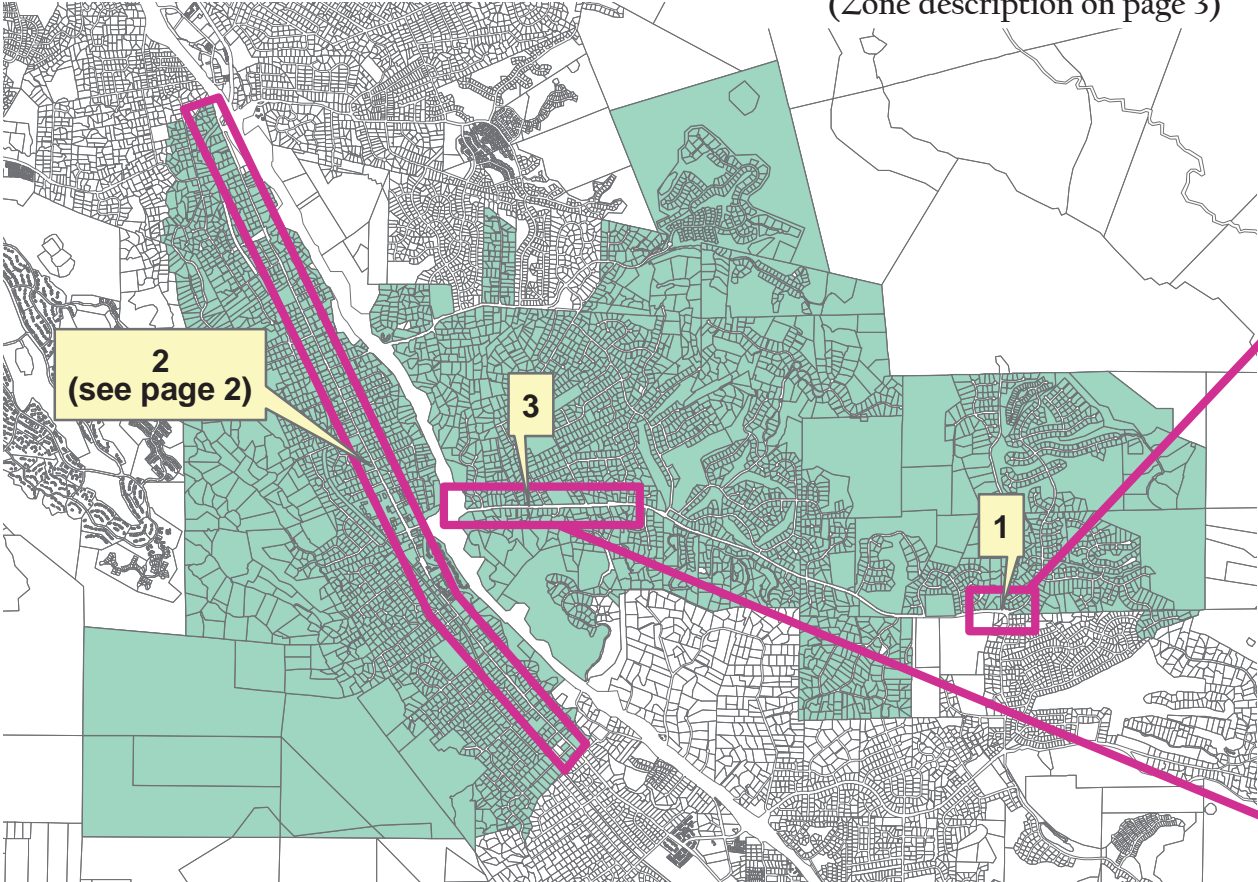



Assessment Diagram Contra Costa County LL-2 Zone 36 Alamo Beautification - Alamo Area (Zone description on page 3)



LEGEND

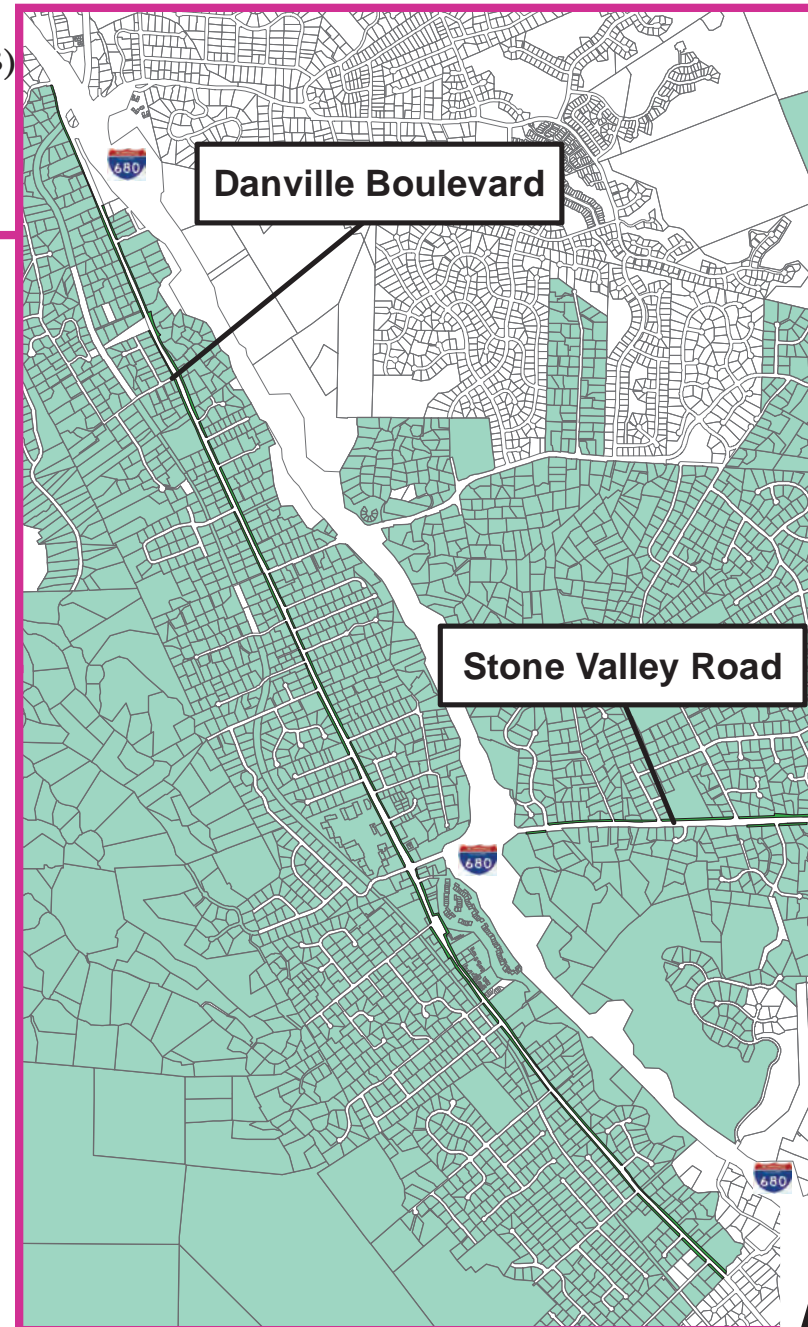
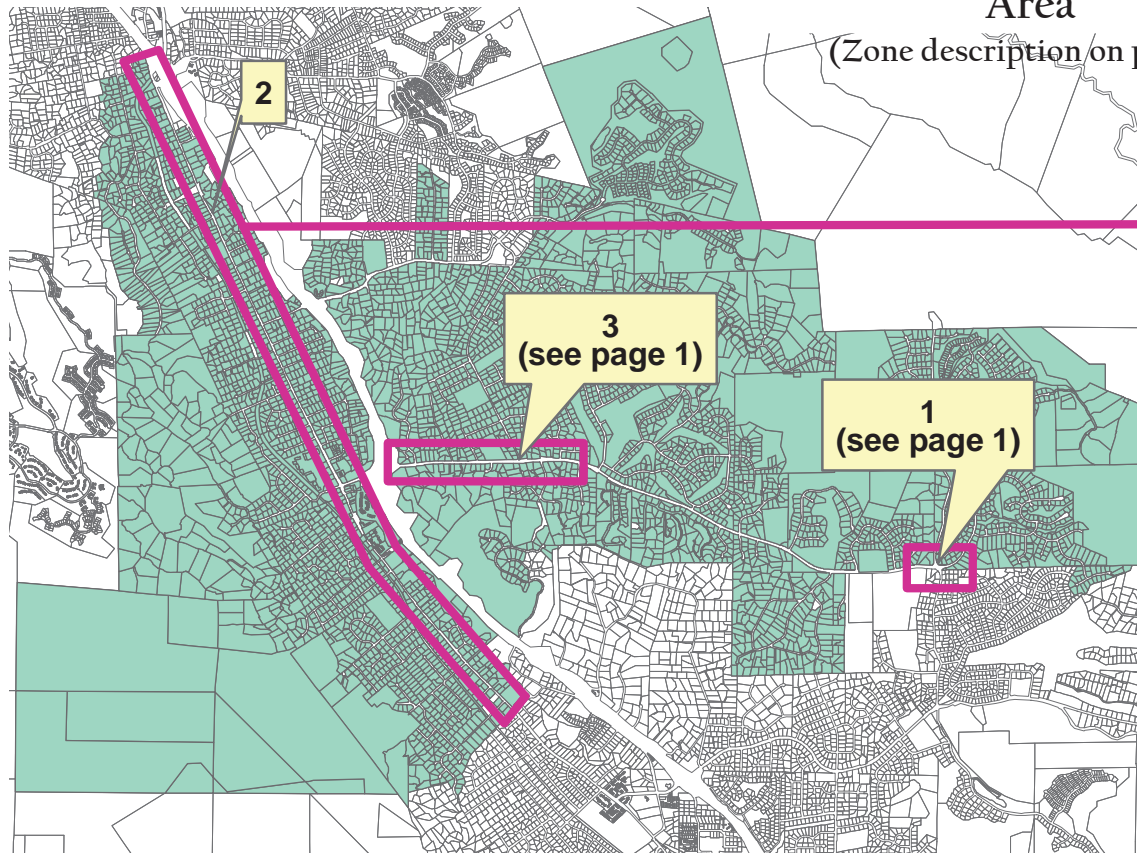
-  Frontage/Median Landscaping
-  Parks
-  Open Space
-  Trails
-  Indicates Maintenance Area from Part A in Engineer's Report



CONTINUED ON NEXT PAGE

Assessment Diagram Contra Costa County LL-2 Zone 36 Alamo Beautification - Alamo Area

(Zone description on page 3)



LEGEND

- Frontage/Median Landscaping
- Parks
- Open Space
- Trails
- Indicates Maintenance Area from Part A in Engineer's Report



Zone 36 (Alamo Beautification - Alamo Area)

Landscaping, irrigation, recreational facilities, and related improvements along/within Danville Boulevard, Livorna Road, Miranda Avenue, and Stone Valley Road. These improvements include:

1. Median islands at the intersection of Stone Valley Road and Green Valley Road;
2. Trees related to the “Danville Boulevard of Trees” project;
3. Stone Valley Road landscaping.

Phase I – North side of Stone Valley Road from Stone Valley Way to Austin Lane. South side from Alamo Ranch Road, approximately 280 linear feet east and south side from High Eagle Road, approximately 760 linear feet West;

Phase II – Full responsibility for areas between Austin Lane and St. Paul Drive, excluding the Phase I area described above;

4. Additional litter pickup and sidewalk and jogging path cleanup along Danville Boulevard, Livorna Road, Miranda Avenue and Stone Valley Road.