



Contra Costa Emergency Medical Services Agency

EMS System Plan Update 2015

1340 ARNOLD DRIVE, SUITE 126
MARTINEZ, CA 94553
(925) 646-4690
FAX (925) 646-4379
WWW.CCCEMS.ORG

July 30, 2016

EXECUTIVE SUMMARY:

The following is a summary of the significant changes in the Contra Costa EMS System Plan since the last reporting period:

In 2015 Contra Costa conducted a successful request for proposal and awarded the emergency ambulance contract to the Alliance a unique new model for emergency ambulance service delivery. The Alliance is a contractor/subcontractor entity with Contra Costa Fire Protection District the contracted entity for ambulance service who is subcontracting with legacy partner American Medical Response to provide the ambulance services. The new contract goes into effect as of January 1, 2016 along with Emergency response zone modifications.

On April 21, 2015 Doctor's Medical Center officially closed after exhaustive efforts failed to keep it open. The preparation prior to the closure was successful in mitigating the impact to the community and was managed as a regional incident engaging the EMS Agencies of Alameda County, Solano County and Marin County in partnership with the Hospital Council of the Bay Area. Contra Costa County continues to work closely with affected regional stakeholders to monitor the long term consequences of changes in emergency services on West Contra Costa County.

The County EMS Agency continues to work the process improvement associated with a transfer of care (TOC) safety initiative in partnership with all community hospitals in our operational area. The EMS Agency has instituted a comprehensive program of data sharing to create opportunities to support improvement that has been held out as a best practice to others statewide. The initiative, data and improvement processes are described in the public report available at <http://cchealth.org/ems/pdf/Hospital-Transfer-of-Care-Performance.pdf>

Contra Costa EMS continues to be active in the promotion of local, regional, state and national neonatal and pediatric disaster preparedness. In November 2015, Contra Costa presented at the first National Pediatric Disaster Coalition Conference in Arizona with over 250 other subject matter experts in the area of neonatal, pediatric and perinatal disaster preparedness. The EMS Agency is home to the California Neonatal, Pediatric and Perinatal Disaster Coalition.

Under the new LEMSA Medical Director leadership of Dr. David Goldstein, CCEMS continues to support a high performance EMS System committed to patient safety and process improvement.

Respectfully,



Patricia Frost RN, MS, PNP
EMS Director
Contra Costa Health Services

2015 Emergency Medical Services (EMS) System Plan¹

SYSTEM PLAN SMART² OBJECTIVES

Progress from Last Reporting Period

No.	Standard	Meets State Standard	FY 2014-2015 Objectives	Progress to Date
1.04	Medical Director	Yes	Medical Director Succession Planning as of November 2015	Progress to Date: Met Dr. David Goldstein has fully assumed his responsibilities as the new Local EMS Agency (LEMSA) Medical Director
1.06	Annual system Plan Update	Yes	Annual EMS System Update to State EMS Authority (EMSA)	Progress to Date: Met submitted EMSA April 2015 New update due July 2016
1.07	Trauma Planning	Yes	Annual Trauma System Status Report.	Progress to Date: Met submitted December 2015 and approved by EMSA on January 2016. Update due by January 2017.
1.08	ALS Planning	Yes	EMS System Review and Modernization study integration into emergency ambulance Request for Proposal (RFP) procurement and selection complete by November 2015.	Progress to Date: Met New ambulance provider competitively procured and new contract started January 1, 2016
1.10	Special Populations	Yes	Exploration of alternative delivery models to match patient need to resource.	Progress to Date: In Progress 1-5 years. Engaged with local Health System partners to explore opportunities.
1.11	System Participants	Yes	Stakeholder participation in update of ambulance ordinance	Progress to Date: In Progress 12-18 months Draft updated ordinance in review with County Counsel.
1.13	Coordination	Yes	Exploration of coordination of EMS Dispatch Centers with Nurse Call centers to support appropriate use of 9-1-1	Progress to Date: Not Started Engage stakeholders within 1-5 years
1.14	Policy and Procedure Manual	Yes	Annually update of prehospital care policies and procedures based on evidence-based care. Implementation of new American Heart Association Guidelines for Advanced Life Support (ALS).	Progress to Date: Ongoing Updated policies and protocols posted on EMS website at www.cccems.org .
			Annually evaluate all patient care based on evidence-based care optimizing patient benefit and patient safety.	Progress to Date: Ongoing Annually. Continue to enhance systems of care policies and practices to support improved patient outcomes

¹ Approved by the EMCC on March 9, 2016

² SMART: Specific, Measurable, Achievable, Realistic and Timely

No.	Standard	Meets State Standard	FY 2014-2015 Objectives	Progress to Date
1.16	System Finances	Yes	Annually review of costs and fees to support sustainable EMS System and EMS Agency oversight and operations.	Progress to Date: Ongoing Monitor and manage current funding effectively to support sustainable programs and activities.
1.20	DNR (Do Not Resuscitate)	Yes	Participating on the Steering Committee for Physicians Orders for Life Sustaining Treatment (POLST) with EMS System Stakeholders supporting the conversation project over 12-24 months.	Progress to date: Ongoing Member of POLST Conversation Project within county.
1.27	Pediatric Emergency Medical and Critical Care System	Yes	Pediatric EMS for Children (EMSC) System Program Plan update and regulation implementation within 1-5 years.	Progress to date: In progress. State EMSC regulations not final. Active on EMSC Technically Advisory Committee. To begin update of EMSC Program within 12 months.
1.28	Exclusive Operating Area (EOA)	Yes	Update of county ambulance ordinance within 12-18 months. Update of EOA I, II and V completed as part of system redesign and ambulance procurement.	Progress to date: In progress. Update of ambulance response areas completed as part of ambulance procurement effective January 1, 2016. Ambulance ordinance update in progress.
2.01	Local EMS Agency Staffing and Assessment of Needs	Yes	EMS System Study and Modernization Project review of EMS staffing needs and workflows to support statutory requirements within 1-2 years.	Progress to date: Ongoing. Re-align staffing in line with required statutory functions, quality and medical oversight.
2.04	Dispatch Training	Yes	Promote support high quality Emergency Medical Dispatch (EMD) dispatcher training and performance consistent for Center of Excellence Accreditation within 3-5 years.	Progress to date: In progress. Dispatch medical oversight policies consistent with Center of Excellence national standards. EMS procurement supports unified and accredited dispatch.
2.06	Response	Yes	Contra Costa EMS (CCEMS) has been active in the mitigation for several fire districts with over 7 fire station closures as of May 2013 and an additional 3 station closures planned by Dec 201. Ongoing evaluation based on safety, funding and opportunities for health care reimbursement.	Progress to date: Ongoing Monitoring coordinated response of ambulance and first responders
2.12	Early Defibrillation	Yes	Continued expansion of public access Automated External Defibrillation (AED) and Law AED programs with integration into dispatch.	Progress to Date: Ongoing. Continue to engage community first responders and citizen responders.
No.	Standard	Meets State Standard	FY 2014-2015 Objectives	Progress to Date

5.06	Hospital Evacuation Plan	Yes	Update medical surge and transportation plans for hospitals within 3 years incorporating standardized training with HICS for all hospital facilities with opportunities for integration of first responders with hospital leadership and incident commanders.	Progress to date: In progress Plan incorporated into Hospital Preparedness Program (HPP) deliverables.
5.10	Pediatric Emergency and Critical Care System	Yes	Continued networking with pediatric emergency care advocates throughout the local, regional and state EMS systems supporting pediatric emergency care best practices.	Progress to date: Ongoing CCEMS and Alameda County (ALCO) EMS have collaborative program of active advocacy for emergency preparedness for children.
5.13	Specialty System Design	Yes	Annual Stroke, STEMI , Trauma and Cardiac Arrest System Evaluation.	Progress to date: Ongoing Continuous CQI program & participation in California Stroke Registry, Cardiac Arrest Registry for Enhanced Survival (CARES), Trauma Registry and California EMS Information System (CEMSIS).
5.14	Public Input	Yes	Active program of engagement with public including quarterly Emergency Medical Care Committee (EMCC) meetings. EMCC bylaw update	Progress to date: Ongoing. EMCC bylaw update completed as of January 2016. See website cccems.org for details. Public and EMCC comment to be included as part of ambulance ordinance review and update process.
6.01	QA/QI Program	Yes	Bi-annual public reporting EMS Hospital transfer of care never event monitoring. Implementation of Quality Review Team (QRT) for review of event reports concerning clinical care concerns. Exploring HIE with hospitals to support exchange of patient outcome information. Hospital and ambulance provider electronic Patient Care Record (ePCR) data exchange.	Progress to date: Ongoing Hospitals public reporting continues. QRT implemented and reviewing cases for trends. Progress to date: In progress Exploration continues between EMS agency, American Medical Response (AMR) , Kaiser, California Office of Health Information Integrity (CALOHII) and EMS Authority.
7.01	Public Education	Yes	Expansion of <i>HeartSafe</i> Communities to include support for CPR, Public Access Defibrillation (PAD), Heart Attack, Stroke and Healthy Lifestyle.	Progress to date: Ongoing continue countywide expansion of outreach in progress.
7.03	Disaster Preparedness Promotion	Yes	Annual advocacy and implementation of regional pediatric medical surge planning. Develop policies and work with stakeholders for implementation and use of BLS providers to backup 911 system in surge	Progress to date: Ongoing CCEMS participating in National, regional and statewide efforts supporting Med/Health Preparedness. Evaluation and update of MCI plan in progress.
No.	Standard	Meets State Standard	FY 2014-2015 Objectives	Progress to Date
8.13	Disaster Medical	Yes	Annual Sustain development and recruitment of Contra	Progress to date: Met MRC coordinator in place to support

	Response		Costa Medical Reserve Corp volunteers and effectively deploy Medical Reserve Corps (MRC) for medical health response as needed.	training to enable effective deployment of MRC.
8.15	Interhospital Communications	Yes	Address ongoing gaps in emergency communications e.g. ReddiNet, switch to East Bay Regional Communications System (EBRCS) hospital radio system.	Progress to date: Ongoing. Annually monitor, support and upgrade as fiscally able interhospital communications
8.18	Enhanced Level: Specialty Care Systems	Yes	Update of new state regulations for specialty care systems e.g. ST Elevation Myocardial Infarction (STEMI), Stroke, EMS.	Progress to date: Ongoing Annually involved in the development through EMSAAC

2016 TIMELINE & ACTIONS TO BE ADDRESSED

All State standards have been met. We plan to address or reassess the following SMART objectives.

No.	Standard	Meets State Standard	2016 Objectives	Time Frame
1.06	Annual System Plan Update	Yes	Update Annually.	July 2016
1.08	ALS Planning	Yes	Support successful ambulance provider transition and monitor for system gaps	July 2016
1.10	Special Populations	Yes	Exploration of alternative delivery models to match patient need to resource.	1-5 years
1.11	System Participants	Yes	Stakeholder participation in update of ambulance ordinance.	1-2 years
1.13	Coordination	Yes	Exploration of EMS dispatch services, exploration of coordination with Nurse Call centers to support appropriate utilization of 9-1-1 services.	1-5 years
1.14	Policy and Procedure Manual	Yes	Update of prehospital care policies and procedures based on prehospital evidence-based care. Implementation of new American Heart Association Guidelines for ALS.	Annually
			Continue to evaluate policies and standard operating procedures for patient benefit, delay in definite care and patient safety. Revise protocols to control cost while prioritizing patient safety.	Annually
1.16	System Finances	Yes	Review of fees and costs to support sustainable delivery of EMS services.	Annually
1.20	Do Not Resuscitate (DNR)	Yes	Participation with "Conversation Project" in Bay Area.	Annually
1.27	Pediatric Emergency Medical and Critical Care System	Yes	Update of Pediatric EMSC plan and future implementation of State Pediatric EMSC System of Care regulations.	3 years
1.28	Exclusive Operating Area	Yes	Complete county ambulance ordinance.	1-2 years
2.01	Local EMS Agency Staffing and Assessment of Needs	Yes	Annual review of EMS Staffing needs and workflows to support statutory requirements.	1-2 years
2.04	Dispatch Training	Yes	Support high quality EMD and dispatcher training for Center of Excellence Accreditation.	1-5 years
2.12	Early Defibrillation	Yes	Expand and enhance Public Access AED and Law AED programs within fiscal resources	Annually
5.06	Hospital Evacuation Plan	Yes	Update of medical surge and transportation plans for hospitals.	1-3 years
5.08	Trauma Planning	Yes	Update of trauma plan.	January 2017
5.10	Pediatric Emergency and Critical Care System	Yes	Continued networking with pediatric emergency care advocates throughout the local, regional and state EMS systems supporting pediatric emergency care best practices.	Annually
No.	Standard	Meets State Standard	2015-2016 Objectives	Time Frame
5.13	Specialty System Design	Yes	Stroke, STEMI, Cardiac Arrest, Trauma, EMS for Children System Program Evaluation.	Annually
5.14	Public Input	Yes	Support EMCC engagement on EMS issues including public input of Ambulance Ordinance	1-2 years
6.01	Quality Assurance (QA)	Yes	Evaluate EMS-Hospital data system integration supporting patient safety and prehospital care.	1-4 years

	/Quality Improvement (QI) Program		Develop Health Information Exchange between EMS ePCR and EPIC (hospital medical record platform)	
7.01	Public Education	Yes	Sustain <i>HeartSafe</i> Communities to include support for CPR, PAD, Heart Attack, Stroke and Healthy Lifestyle.	Annually
7.03	Disaster Preparedness Promotion	Yes	Continued advocacy and implementation of regional pediatric medical surge planning.	Annually
8.13	Disaster Medical Response	Yes	Sustain development and recruitment of Contra Costa Medical Reserve Corp volunteers. Effective MRC capability for medical health deployment as needed.	Annually
8.15	Interhospital Communications	Yes	Address ongoing gaps and improvement opportunities for Redd Net platform to support reliable use by hospitals. Replace old radio system (MEDARS) when sunsets and implement new EBRCS hospital radio system.	Annually
8.18	Enhanced Level: Specialty Care Systems	Yes	Evaluate new regulations for specialty care system implementation when complete .e.g. STEMI, Stroke, EMS for Children.	1-2 years

A. SYSTEM ORGANIZATION AND MANAGEMENT

		Does not currently meet standard	Meets minimum standard	Meets recommended guidelines	Short-range plan	Long-range plan
Agency Administration:						
1.01	LEMSA Structure		X			
1.02	LEMSA Mission		X			
1.03	Public Input		X			
1.04	Medical Director		X	X		
Planning Activities:						
1.05	System Plan		X			
1.06	Annual Plan Update		X			
1.07	Trauma Planning		X	X		
1.08	ALS Planning		X			
1.09	Inventory of Resources		X			
1.10	Special Populations		X	X		
1.11	System Participants		X	X		
Regulatory Activities:						
1.12	Review & Monitoring		X			
1.13	Coordination		X			
1.14	Policy & Procedures Manual		X			
1.15	Compliance w/Policies		X			
System Finances:						
1.16	Funding Mechanism		X			
Medical Direction:						
1.17	Medical Direction		X			
1.18	QA/QI		X	X		
1.19	Policies, Procedures, Protocols		X	X		

SYSTEM ORGANIZATION AND MANAGEMENT (continued)

		Does not currently meet standard	Meets minimum standard	Meets recommended guidelines	Short-range plan	Long-range plan
1.20	DNR Policy		X			
1.21	Determination of Death		X			
1.22	Reporting of Abuse		X			
1.23	Interfacility Transfer		X			
Enhanced Level: Advanced Life Support						
1.24	ALS Systems		X	X		
1.25	On-Line Medical Direction		X	X		
Enhanced Level: Trauma Care System:						
1.26	Trauma System Plan		X			
Enhanced Level: Pediatric Emergency Medical and Critical Care System:						
1.27	Pediatric System Plan		X			
Enhanced Level: Exclusive Operating Areas:						
1.28	EOA Plan		X			

B. STAFFING/TRAINING

		Does not currently meet standard	Meets minimum standard	Meets recommended guidelines	Short-range plan	Long-range plan
Local EMS Agency:						
2.01	Assessment of Needs		X			
2.02	Approval of Training		X			
2.03	Personnel		X			
Dispatchers:						
2.04	Dispatch Training		X	X		
First Responders (non-transporting):						
2.05	First Responder Training		X	X		
2.06	Response		X			
2.07	Medical Control		X			
Transporting Personnel:						
2.08	EMT-I Training		X	X		
Hospital:						
2.09	CPR Training		X			
2.10	Advanced Life Support		X	X		
Enhanced Level: Advanced Life Support:						
2.11	Accreditation Process		X			
2.12	Early Defibrillation		X			
2.13	Base Hospital Personnel		X			

C. COMMUNICATIONS

		Does not currently meet standard	Meets minimum standard	Meets recommended guidelines	Short-range plan	Long-range plan
Communications Equipment:						
3.01	Communication Plan		X	X		
3.02	Radios		X	X		
3.03	Interfacility Transfer		X			
3.04	Dispatch Center		X			
3.05	Hospitals		X	X		
3.06	MCI/Disasters		X			
Public Access:						
3.07	9-1-1 Planning/Coordination		X	X		
3.08	9-1-1 Public Education		X			
Resource Management:						
3.09	Dispatch Triage		X	X		
3.10	Integrated Dispatch		X	X		

D. RESPONSE/TRANSPORTATION

		Does not currently meet standard	Meets minimum standard	Meets recommended guidelines	Short-range plan	Long-range plan
Universal Level:						
4.01	Service Area Boundaries		X	X		
4.02	Monitoring		X	X		
4.03	Classifying Medical Requests		X			
4.04	Prescheduled Responses		X			
4.05	Response Time		X	X		
4.06	Staffing		X			
4.07	First Responder Agencies		X			
4.08	Medical & Rescue Aircraft		X			
4.09	Air Dispatch Center		X			
4.10	Aircraft Availability		X			
4.11	Specialty Vehicles		X	X		
4.12	Disaster Response		X			
4.13	Intercounty Response		X	X		
4.14	Incident Command System		X			
4.15	MCI Plans		X			
Enhanced Level: Advanced Life Support:						
4.16	ALS Staffing		X	X		
4.17	ALS Equipment		X			
Enhanced Level: Ambulance Regulation:						
4.18	Compliance		X			
Enhanced Level: Exclusive Operating Permits:						
4.19	Transportation Plan		X			
4.20	"Grandfathering"		X			
4.21	Compliance		X			
4.22	Evaluation		X			

E. FACILITIES/CRITICAL CARE

		Does not currently meet standard	Meets minimum standard	Meets recommended guidelines	Short-range plan	Long-range plan
Universal Level:						
5.01	Assessment of Capabilities		X	X		
5.02	Triage & Transfer Protocols		X			
5.03	Transfer Guidelines		X			
5.04	Specialty Care Facilities		X			
5.05	Mass Casualty Management		X	X		
5.06	Hospital Evacuation		X			
Enhanced Level: Advanced Life Support:						
5.07	Base Hospital Designation		X			
Enhanced Level: Trauma Care System:						
5.08	Trauma System Design		X			
5.09	Public Input		X			
Enhanced Level: Pediatric Emergency Medical and Critical Care System:						
5.10	Pediatric System Design		X			
5.11	Emergency Departments		X	X		
5.12	Public Input		X			
Enhanced Level: Other Specialty Care Systems:						
5.13	Specialty System Design		X			
5.14	Public Input		X			

F. DATA COLLECTION/SYSTEM EVALUATION

		Does not currently meet standard	Meets minimum standard	Meets recommended guidelines	Short-range plan	Long-range plan
Universal Level:						
6.01	QA/QI Program		X	X		
6.02	Prehospital Records		X			
6.03	Prehospital Care Audits		X	X		
6.04	Medical Dispatch		X			
6.05	Data Management System		X	X		
6.06	System Design Evaluation		X			
6.07	Provider Participation		X			
6.08	Reporting		X			
Enhanced Level: Advanced Life Support:						
6.09	ALS Audit		X	X		
Enhanced Level: Trauma Care System:						
6.10	Trauma System Evaluation		X			
6.11	Trauma Center Data		X	X		

G. PUBLIC INFORMATION AND EDUCATION

		Does not currently meet standard	Meets minimum standard	Meets recommended guidelines	Short-range plan	Long-range plan
Universal Level:						
7.01	Public Information Materials		X	X		
7.02	Injury Control		X	X		
7.03	Disaster Preparedness		X	X		
7.04	First Aid & CPR Training		X	X		

H. DISASTER MEDICAL RESPONSE

		Does not currently meet standard	Meets minimum standard	Meets recommended guidelines	Short-range plan	Long-range plan
Universal Level:						
8.01	Disaster Medical Planning		X			
8.02	Response Plans		X	X		
8.03	HazMat Training		X			
8.04	Incident Command System		X	X		
8.05	Distribution of Casualties		X	X		
8.06	Needs Assessment		X	X		
8.07	Disaster Communications		X			
8.08	Inventory of Resources		X	X		
8.09	DMAT Teams		X	X		
8.10	Mutual Aid Agreements		X			
8.11	CCP Designation		X			
8.12	Establishment of CCPs		X			
8.13	Disaster Medical Training		X	X		
8.14	Hospital Plans		X	X		
8.15	Interhospital Communications		X	X		
8.16	Prehospital Agency Plans		X			
Enhanced Level: Advanced Life Support:						
8.17	ALS Policies		X			
Enhanced Level: Specialty Care Systems:						
8.18	Specialty Center Roles		X			
Enhanced Level: Exclusive Operating Areas/Ambulance Regulations:						
8.19	Waiving Exclusivity		X			

TABLE 2: SYSTEM RESOURCES AND OPERATIONS

System Organization and Management

Reporting Year: 2015

1. Percentage of population served by each level of care by county:
(Identify for the maximum level of service offered; the total of a, b, and c should equal 100%.)

County: Contra Costa County

A. Basic Life Support (BLS)	<u>0</u> %
B. Limited Advanced Life Support (LALS)	<u>0</u> %
C. Advanced Life Support (ALS)	<u>100</u> %

2. Type of agency	<u>B</u>
a) Public Health Department	
b) <u>County Health Services Agency</u>	
c) Other (non-health) County Department	
d) Joint Powers Agency	
e) Private Non-Profit Entity	
f) Other: _____	

3. The person responsible for day-to-day activities of the EMS agency reports to	<u>B</u>
a) Public Health Officer	
b) <u>Health Services Agency Director/Administrator</u>	
c) Board of Directors	
d) Other: _____	

4. Indicate the non-required functions which are performed by the agency:

Implementation of exclusive operating areas (ambulance franchising)	<u>X</u>
Designation of trauma centers/trauma care system planning	<u>X</u>
Designation/approval of pediatric facilities	<u>X</u>
Designation of STEMI centers	<u>X</u>
Designation of Stroke centers	<u>X</u>
Designation of other critical care centers	<u>X</u>
Development of transfer agreements	<u>X</u>
Enforcement of local ambulance ordinance	<u>X</u>
Enforcement of ambulance service contracts	<u>X</u>
Operation of ambulance service	<u>N/A</u>

Table 2 - System Organization & Management (cont.)

Continuing education	<u>X</u>
Personnel training	<u>N/A</u>
Operation of oversight of EMS dispatch center	
Non-medical disaster planning	<u>X</u>
Administration of critical incident stress debriefing team (CISD)	<u>N/A</u>
Administration of disaster medical assistance team (DMAT)	<u>N/A</u>
Administration of EMS Fund [Senate Bill (SB) 12/612]	<u>X</u>
Other: Tracking and monitoring hospital emergency and critical care capacity	<u>X</u>
Other: Procuring and monitoring emergency ambulance services countywide	<u>X</u>
Other: Implementing EMS program enhancements funded under County Service Area EM-1	<u>X</u>
Other: Planning for/coordinating disaster medical response at local/regional levels	<u>X</u>

Table 2 - System Organization & Management (cont.)

5. EXPENSES FY 14/15¹	
Salaries and benefits	\$2,283,061
Contract services	\$100,619
Operations (e.g. copying, postage, facilities)	\$307,858
Travel	\$17,807
Fixed assets	\$0
Indirect expenses (overhead)	\$289,019
Ambulance subsidy	\$0
EMS Fund payments to physicians/hospital	\$1,427,391
Dispatch center operations (non-staff)	\$250,000
Training program operations	\$0
Other: 1st Responder Enhancements	\$2,331,133
Other: HazMat	\$150,000
TOTAL EXPENSES	\$7,156,888
6. SOURCES OF REVENUE FY 14/15	
Special project grant(s) [from EMSA]	\$0
Preventive Health and Health Services (PHHS) Block Grant	\$0
Office of Traffic Safety (OTS)	\$0
State general fund (RDMHS)	\$0
County general fund	\$0
Other local tax funds (e.g., EMS district)	\$4,704,631
County contracts (e.g., multi-county agencies)	\$0
Certification fees	\$42,351
Training program approval fees	\$0
Training program tuition/Average daily attendance funds (ADA)	\$0
Job Training Partnership ACT (JTPA) funds/other payments	\$0
Base hospital application fees	\$0
Base hospital designation fees	\$0
Trauma center application fees	\$0
Trauma center designation fees	\$250,000
Pediatric facility approval fees	\$0
Pediatric facility designation fees	\$0
Other critical care center designation fees (STEMI)	\$85,000
Ambulance service/vehicle fees/CCTP revenue	\$75,000
Contributions	\$0
EMS Fund (SB 12/612)	\$2,213,164
Other: Ambulance Penalty Fees	\$40,000
Other grants: UASI, HIE, NACCHO, SHGP, DHS	\$3,500
Other grants: Hospital Preparedness Program	\$475,116
TOTAL REVENUE	\$7,888,762
Surplus (deficit)	\$731,873

¹ Expenses and Revenue vary year to year associated with grant awards, penalties and EMS district funds. During years there revenue exceeds expenses that revenue is placed in reserve for the next fiscal year.

Table 2 - System Organization & Management (cont.)

7. Fee structure: Our fee structure is:

First responder certification		<u>\$0</u>
EMS dispatcher certification		<u>\$0</u>
EMT-I certification (This includes the \$75 EMSA fee)		<u>\$155</u>
EMT-I recertification (This includes the \$37 EMSA fee)		<u>\$117</u>
EMT-defibrillation certification		<u>N/A</u>
EMT-defibrillation recertification		<u>N/A</u>
AEMT certification		<u>N/A</u>
AEMT recertification		<u>N/A</u>
EMT-P accreditation		<u>\$80</u>
Mobile Intensive Care Nurse/ Authorized Registered Nurse (MICN/ARN) certification		<u>\$60</u>
MICN/ARN recertification		<u>\$60</u>
EMT-I training program approval		<u>\$3,000</u>
AEMT training program approval		<u>N/A</u>
EMT-P training program approval		<u>\$15,000</u>
MICN/ARN training program approval		<u>N/A</u>
Base hospital application		<u>\$0</u>
Base hospital designation		<u>\$0</u>
Trauma center application		<u>\$0</u>
Trauma center designation		<u>\$250,000</u>
Pediatric facility approval		<u>\$0</u>
Pediatric facility designation		<u>\$0</u>
Other critical care center application		
Type: STROKE CENTER DESIGNATION	(Annually)	<u>\$5,000</u>
Type: STEMI CENTER DESIGNATION	(Annually)	<u>\$5,000</u>
Continuing Education Provider Authorization/Reauthorization		<u>\$2,000</u>
Ambulance service licence		<u>N/A</u>
Ambulance vehicle permit (Emergency)	(Per ERA)	<u>\$7,500</u>
Other: Ambulance Vehicle Permit (Non-Emergency)		<u>\$7,500</u>
Other: EMS Aircraft Classification		<u>\$250</u>
Other: EMS Aircraft Authorization ⁵	(Biennial)	<u>\$15,000</u>

⁵ 50% Fee reduction as performance incentive per written agreement.

Table 2 - System Organization & Management (cont.)

CATEGORY	ACTUAL TITLE	FTE POSITIONS (EMS ONLY)	TOP SALARY BY HOURLY EQUIVALENT ²	BENEFITS (%of Salary) ³	COMMENTS
EMS Admin./Coord./Director	EMS Director	1	\$ 51.04 (base)	37%	
Asst. Admin./Admin. Asst./Admin. Mgr.	EMS Program Manager Assistant Director	1	\$ 47.59 (base)	37%	-
Program Coordinator/Field Liaison	Prehospital Care Coordinator(s)	3	\$ 41.47 (base)	37%	
-STEMI/Stroke Coordinator	Pre-hospital Care Coordinator Advanced RN	1	\$ 51.39(base)	37%	
Medical Director	EMS Medical Director	1	\$ 80.83 (base)	37%	
Other MD/Medical Consult/Training Medical Director	EMS Medical Director Consultant	,5	\$80.83	37%	-
Disaster Medical Planner	Emergency Preparedness Manager	1	\$ 45.56 (base)	37%	HPP supported position

Staffing as of 12/31/2014
N/A = not applicable

² Top salary equivalent in the position category. Individual staff salaries based on position qualifications and longevity with organization.
³ Standard percentage used to calculate benefits. Actual benefits may be considerably more depending on position and benefits selected by employee, etc. County contribution is not reflected.

Table 2 - System Organization & Management (cont.)

CATEGORY	ACTUAL TITLE	FTE⁴ POSITIONS (EMS ONLY)	TOP SALARY BY HOURLY EQUIVALENT⁵	BENEFITS (%of Salary)	COMMENTS
Dispatch Supervisor	Prehospital Care Coordinator Dispatch/LE	1	\$ 41.47(base)	N/A	Dispatch oversight assigned
Medical Planner	Emergency Preparedness Training Coordinator	1	\$37.10 (base)	37%	HPP supported position
Data Evaluator/Analyst	N/A	N/A	N/A	N/A	
QA/QI Coordinator	Prehospital QI Coordinator	1	\$ 43.54 (base)	37%	
Public Info. & Education Coordinator	EMS Specialist and MRC Coordinator	1	\$30.45 (base)	37%	HPP supported position
Executive Secretary	Secretary Advanced	1	\$ 21.34 (base)	37%	
Other Clerical	Clerk	1	\$16.43 (base)	37%	
Data Entry Clerk	Administrative Analyst	1	\$ 26.73 (base)	37%	
Other	Account Clerk	1	\$ 24.38 (base)	37%	

⁴ Top salary equivalent in the position category. Individual staff salaries based on position qualifications and longevity with organization.

⁵ Standard percentage used to calculate benefits. Actual benefits may be considerably more depending on position and benefits selected by employee, etc. County contribution is not reflected

Local EMS Agency and County Organization Chart(s)

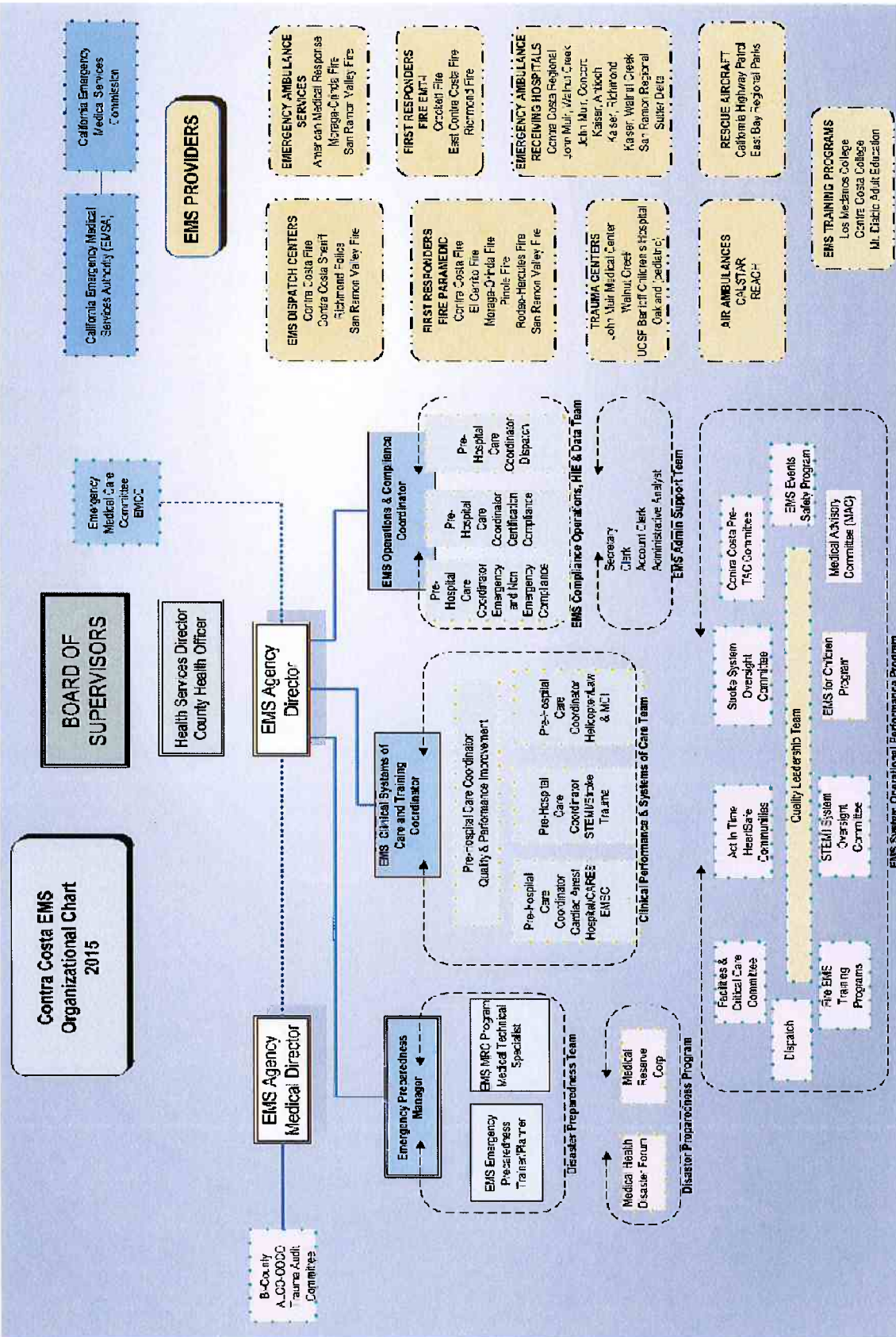


TABLE 3: SYSTEM RESOURCES AND OPERATIONS - Personnel/Training

Reporting Year: 2015

	EMT - Is	AEMTs	EMT - Ps	MICN
Total Certified (active)	1182	0		20
Number newly certified this year	185	0		N/A
Number recertified this year	276	0		N/A
Number of accredited personnel this year	572	0	244	N/A
Total number of accredited personnel on July 1 of the reporting year	1182	0	2	N/A
Number of certification reviews resulting in:				
a) formal investigations	10	0		0
b) probation	15	0	-	0
c) suspensions	2	0	-	0
d) revocations	19	0		0
e) denials	1	0		0
f) denials of renewal	0	0		0
g) no action taken	0	0	-	0

N/A = not available/applicable

1. Early defibrillation:
 - a) Number of EMT-I (defib) authorized to use AEDs 1182
 - b) Number of public safety (defib) certified (non-EMT-I) N/A

2. Do you have an EMR training program yes no

TABLE 4: SYSTEM RESOURCES AND OPERATIONS - Communications

County: Contra Costa County

Reporting Year: 2015

- | | |
|---|--|
| 1. Number of primary Public Service Answering Points (PSAP) | <u>10</u> |
| 2. Number of secondary PSAPs | <u>3</u> |
| 3. Number of dispatch centers directly dispatching ambulances | <u>3</u> |
| 4. Number of EMS dispatch agencies utilizing EMD guidelines | <u>3</u> |
| 5. Number of designated dispatch centers for EMS Aircraft | <u>3</u> |
| 6. Who is your primary dispatch agency for day-to-day emergencies?
<u>Contra Costa County Fire Protection District, Richmond Police Department</u>
<u>San Ramon Valley Fire Protection District</u> | |
| 7. Who is your primary dispatch agency for a disaster?
<u>Contra Costa County Sheriff's Office</u> | |
| 8. Do you have an operational area disaster communication system? | X Yes <input type="checkbox"/> No |
| a. Radio primary frequency <u>XCC EMS1 (MEDARS T-Band 4 Channel)</u> | |
| b. Other methods <u>ReddiNet⁶</u> | |
| c. Can all medical response units communicate on the same disaster communications system? | X Yes <input type="checkbox"/> No |
| d. Do you participate in the Operational Area Satellite Information System (OASIS)? | X Yes <input type="checkbox"/> No |
| e. Do you have a plan to utilize the Radio Amateur Civil Emergency Services (RACES) as a back-up communication system? | X Yes <input type="checkbox"/> No |
| 1) Within the operational area? | X Yes <input type="checkbox"/> No |
| 2) Between operation area and the region and/or state? | X Yes <input type="checkbox"/> No |

⁶ ReddiNet communications between hospitals, ambulance dispatch centers and EMS Agency; Satellite phones

**TABLE 5: SYSTEM RESOURCES AND OPERATIONS
Response/Transportation**

Reporting Year: 2015

Early Defibrillation Providers

1. Number of EMT-Defibrillation providers:

- a. 3 Crockett, ECCFD and Richmond (Non-ALS Fire First Responders)
- b. 14 Police Agencies

SYSTEM STANDARD RESPONSE TIMES (90TH PERCENTILE)

Enter the response times in the appropriate boxes:

	METRO/URBAN	SUBURBAN/ RURAL	WILDERNESS	SYSTEMWIDE
BLS and CPR capable first responder ⁷	6-8 min	N/A	N/A	6-8 min
Early defibrillation responder ⁸	6-8 min	N/A	N/A	6-8 min
Advanced life support responder ⁹	<10 min	N/A	N/A	Varies by Local Jurisdiction
Transport Ambulance (EMS)	< 12 min Varies by EOA	20 min	30 min	Varies by EOA

N/A = not available

⁷ Includes bystanders, law enforcement and EMS

⁸ Includes bystander with PAD, law enforcement and EMS

⁹ Fire EMS first medical response paramedic

**TABLE 6: SYSTEM RESOURCES AND OPERATIONS
Facilities/Critical Care**

Reporting Year: 2015

Trauma

Trauma patients:

1. Number of patients meeting trauma triage criteria	<u>1766</u>
2. Number of major trauma victims transported directly to a trauma center by ambulance	<u>1471</u>
3. Number of major trauma patients transferred to a trauma center ¹¹	<u>37</u>
4. Number of patients meeting triage criteria who were not treated at a trauma center	<u>295</u>

Emergency Departments

Total number of emergency departments	<u>9</u>
1. Number of referral emergency services	<u>0</u>
2. Number of standby emergency services ¹²	<u>1</u>
3. Number of basic emergency services	<u>8</u>
4. Number of comprehensive emergency services	<u>0</u>

Receiving Hospitals

1. Number of receiving hospitals with written agreements	<u>8¹³</u>
2. Number of base hospitals with written agreements	<u>1</u>

¹¹ Defined as total number of under-triages for that year.

¹² Doctor's Medical Center in San Pablo stopped receiving emergency ambulance traffic as of 8/7/2014 and was downgraded by State Licensing and Accreditation to a standby receiving center as of 8/25/2014

¹³ Includes STEMI, Stroke and Trauma

TABLE 7: SYSTEM RESOURCES AND OPERATIONS -- Disaster Medical

Reporting Year: 2015

County: Contra Costa County

SYSTEM RESOURCES

1. Casualty Collections Points (CCP)

a. Where are your CCPs located?

Attachment 1: Potential Sites and Site Assessment Checklist

Site Name	Address	City
1. Buchanan Airport	550 Sally Ride Drive	Concord
2. Contra Costa Community College	2600 Mission Bell Drive	San Pablo
3. Diablo Valley Community College	321 Golf Club Road	Pleasant Hill
4. Los Medanos Community College	2700 E. Leland Road	Pittsburg
5. Diablo Valley Comm. College Extension	Watermill Road	San Ramon
6. PG&E Conference Center	3301 Crow Canyon Road	San Ramon
7. County Fairgrounds	1201 West 10 th Street	Antioch

b. How are they staffed? Situational¹³

c. Do you have a supply system for supporting them for 72 hours? **X Yes** No

2. CISD

Do you have a CISD provider with 24 hour capability? **X Yes** No

3. Medical Response Team

a. Do you have any team medical response capability? **X Yes** No

b. For each team, are they incorporated into your local response plan? **X Yes** No

c. Are they available for statewide response?¹⁴ **X Yes** No

d. Are they part of a formal out-of-state response system?¹⁵ **X Yes** No

4. Hazardous Materials

a. Do you have any HazMat trained medical response teams? **X Yes** No

b. At what HazMat level are they trained? **First Responder**

c. Do you have the ability to do decontamination in an emergency room? **X Yes** No

d. Do you have the ability to do decontamination in the field? **X Yes** No

¹³ As specified in Field Treatment Site Appendix F of County MCI Plan

¹⁴ Volunteer Medical Reserve Corps

¹⁵ Through Office of Civilian Volunteers

OPERATIONS

1. Are you using a Standardized Emergency Management System (SEMS) that incorporates a form of Incident Command System (ICS) structure? **X Yes** No
2. What is the maximum number of local jurisdiction EOCs you will need to interact with in a disaster? 20
3. Have you tested your MCI Plan this year in a:
- a. Real event? Medical **Mutual Aide Response to Valley Fire 2015** **X Yes** No
9 Declared MCI's during 2015
- b. Exercise? **Contra County Medical Health Exercise November 2015** **X Yes** No
- Operational response to mass casualty training (Feb 2015)
4. List all counties with which you have a written medical mutual aid agreement. **All counties in CA through the Mutual Aid Agreement¹⁶**
5. Do you have formal agreements with hospitals in your operational area to participate in disaster planning and response? **X Yes** No
6. Do you have a formal agreements with community clinics in your operational areas to participate in disaster planning and response? **X Yes** No
7. Are you part of a multi-county EMS system for disaster response? **X Yes** No
8. Are you a separate department or agency? Yes **X No**
9. If not, to whom do you report **Health Officer of Contra Costa Health Services**
8. If your agency is not in the Health Department, do you have a plan to coordinate public health and environmental health issues with the Health Department? **Not applicable¹⁷**

¹⁶ Through California Disaster Mutual Aid Agreement

¹⁷ Agency is part of Contra Costa Health Services (County Health Department)

Table 8: Resource Directory

Reporting Year: 2015

Response/Transportation/Providers

County: Contra Costa County Provider American Medical Response Response Zone: ERA I-

Address: 5151 Port Chicago Hwy; Suites A Number of Ambulance Vehicles in Fleet: 49
Concord, CA 94520

Phone Number: 888-267-6591 Average Number of Ambulances on Duty At 12:00 p.m. (noon) on Any Given Day: 31 countywide

<u>Written Contract:</u> <input checked="" type="checkbox"/> <u>Yes</u> <input type="checkbox"/> <u>No</u>	<u>Medical Director:</u> <input checked="" type="checkbox"/> <u>Yes</u> <input type="checkbox"/> <u>No</u>	<u>System Available 24 Hours:</u> <input checked="" type="checkbox"/> <u>Yes</u> <input type="checkbox"/> <u>No</u>	<u>Level of Service:</u> <input checked="" type="checkbox"/> <u>Transport</u> <input type="checkbox"/> <u>Non-Transport</u> <input checked="" type="checkbox"/> <u>ALS</u> <input checked="" type="checkbox"/> <u>BLS</u> <input checked="" type="checkbox"/> <u>9-1-1</u> <input type="checkbox"/> <u>7-Digit</u> <input type="checkbox"/> <u>CCT</u> <input type="checkbox"/> <u>IFT</u> <input checked="" type="checkbox"/> <u>Ground</u> <input type="checkbox"/> <u>Air</u> <input type="checkbox"/> <u>Water</u>
---	---	--	---

<u>Ownership:</u> <input type="checkbox"/> <u>Public</u> <input checked="" type="checkbox"/> <u>Private</u>	<u>If Public:</u> <input type="checkbox"/> <u>Fire</u> <input type="checkbox"/> <u>Law</u> <input type="checkbox"/> <u>Other</u> Explain: _____	<u>If Public:</u> <input type="checkbox"/> <u>City</u> <input type="checkbox"/> <u>State</u> <input type="checkbox"/> <u>Federal</u> <input type="checkbox"/> <u>County</u> <input type="checkbox"/> <u>Fire District</u>	<u>If Air:</u> <input type="checkbox"/> <u>Rotary</u> <input type="checkbox"/> <u>Fixed Wing</u>	<u>Air Classification:</u> <input type="checkbox"/> <u>Auxiliary Rescue</u> <input type="checkbox"/> <u>Air Ambulance</u> <input type="checkbox"/> <u>ALS Rescue</u> <input type="checkbox"/> <u>BLS Rescue</u>
---	---	--	--	---

Transporting Agency¹⁸

85761 Total number of responses
 58687 Number of emergency responses
 27074 Number of non-emergency responses

68281 Total number of transports
 62879 Number of emergency transports
 5402 Number of non-emergency transports

¹⁸ Data reflects responses and transports for all response zones provider is responsible for

Table 8: Resource Directory

Reporting Year: 2015

Response/Transportation/Providers

County: Contra Costa County Provider American Medical Response Response Zone: ERA II

Address: 5151 Port Chicago Hwy, Suites A Number of Ambulance Vehicles in Fleet: 49
Concord, CA 94520

Phone Number: 888-267-6591 Average Number of Ambulances on Duty At 12:00 p.m. (noon) on Any Given Day: 31 countywide

<p><u>Written Contract:</u></p> <p><input checked="" type="checkbox"/> <u>Yes</u> <input type="checkbox"/> <u>No</u></p>	<p><u>Medical Director:</u></p> <p><input checked="" type="checkbox"/> <u>Yes</u> <input type="checkbox"/> <u>No</u></p>	<p><u>System Available 24 Hours:</u></p> <p><input checked="" type="checkbox"/> <u>Yes</u> <input type="checkbox"/> <u>No</u></p>	<p><u>Level of Service:</u></p> <p><input checked="" type="checkbox"/> <u>Transport</u> <input checked="" type="checkbox"/> <u>ALS</u> <input checked="" type="checkbox"/> <u>9-1-1</u> <input checked="" type="checkbox"/> <u>Ground</u> <input type="checkbox"/> <u>Non-Transport</u> <input checked="" type="checkbox"/> <u>BLS</u> <input type="checkbox"/> <u>7-Digit</u> <input type="checkbox"/> <u>Air</u> <input type="checkbox"/> <u>IFT</u> <input type="checkbox"/> <u>CCT</u> <input type="checkbox"/> <u>Water</u></p>
<p><u>Ownership:</u></p> <p><input type="checkbox"/> <u>Public</u> <input checked="" type="checkbox"/> <u>Private</u></p>	<p><u>If Public:</u></p> <p><input type="checkbox"/> <u>Fire</u> <input type="checkbox"/> <u>Law</u> <input type="checkbox"/> <u>Other</u> <u>Explain: _____</u></p>	<p><u>If Public:</u></p> <p><input type="checkbox"/> <u>City</u> <input type="checkbox"/> <u>County</u> <input type="checkbox"/> <u>State</u> <input type="checkbox"/> <u>Fire District</u> <input type="checkbox"/> <u>Federal</u></p>	<p><u>If Air:</u></p> <p><input type="checkbox"/> <u>Rotary</u> <input type="checkbox"/> <u>Fixed Wing</u></p> <p><u>Air Classification:</u></p> <p><input type="checkbox"/> <u>Auxiliary Rescue</u> <input type="checkbox"/> <u>Air Ambulance</u> <input type="checkbox"/> <u>ALS Rescue</u> <input type="checkbox"/> <u>BLS Rescue</u></p>

Table 8: Resource Directory

Reporting Year: 2015

Response/Transportation/Providers

County: Contra Costa County Provider American Medical Response Response Zone: ERA V
 Address: 5151 Port Chicago Hwy; Suites A Number of Ambulance Vehicles in Fleet: 49
Concord, CA 94520
 Phone Number: 888-267-6591 Average Number of Ambulances on Duty At 12:00 p.m. (noon) on Any Given Day: 31 countywide

<p><u>Written Contract:</u> <input checked="" type="checkbox"/> <u>Yes</u> <input type="checkbox"/> <u>No</u></p>	<p><u>Medical Director:</u> <input checked="" type="checkbox"/> <u>Yes</u> <input type="checkbox"/> <u>No</u></p>	<p><u>System Available 24 Hours:</u> <input checked="" type="checkbox"/> <u>Yes</u> <input type="checkbox"/> <u>No</u></p>	<p><u>Level of Service:</u> <input checked="" type="checkbox"/> <u>Transport</u> <input type="checkbox"/> <u>Non-Transport</u> <input checked="" type="checkbox"/> <u>ALS</u> <input checked="" type="checkbox"/> <u>BLS</u> <input checked="" type="checkbox"/> <u>9-1-1</u> <input type="checkbox"/> <u>7-Digit</u> <input type="checkbox"/> <u>CCT</u> <input type="checkbox"/> <u>IFT</u> <input checked="" type="checkbox"/> <u>Ground</u> <input type="checkbox"/> <u>Air</u> <input type="checkbox"/> <u>Water</u></p>
<p><u>Ownership:</u> <input type="checkbox"/> <u>Public</u> <input checked="" type="checkbox"/> <u>Private</u></p>	<p><u>If Public:</u> <input type="checkbox"/> <u>Fire</u> <input type="checkbox"/> <u>Law</u> <input type="checkbox"/> <u>Other</u> Explain: _____</p>	<p><u>If Public:</u> <input type="checkbox"/> <u>City</u> <input type="checkbox"/> <u>County</u> <input type="checkbox"/> <u>State</u> <input type="checkbox"/> <u>Fire District</u> <input type="checkbox"/> <u>Federal</u></p>	<p><u>If Air:</u> <input type="checkbox"/> <u>Rotary</u> <input type="checkbox"/> <u>Fixed Wing</u> <u>Air Classification:</u> <input type="checkbox"/> <u>Auxiliary Rescue</u> <input type="checkbox"/> <u>Air Ambulance</u> <input type="checkbox"/> <u>ALS Rescue</u> <input type="checkbox"/> <u>BLS Rescue</u></p>

Table 8: Resource Directory

Reporting Year: 2015

Response/Transportation/Providers

County: Contra Costa County **Provider:** Contra Costa County Fire Protection District **Response Zone:** Contra Costa Fire Protection District
Address: 2010 Geary Road **Number of Engines/Apparatus in Fleet:** 27 Engines; 66 Apparatus
Pleasant Hill, CA 94523
Phone Number: 925-941-3300 **Average Number of Engines/Apparatus on Duty At 12:00 (noon) on Any Given Day:** 27

Written Contract: <input checked="" type="checkbox"/> <u>Yes</u> <input type="checkbox"/> <u>No</u>	Medical Director: <input checked="" type="checkbox"/> <u>Yes</u> <input type="checkbox"/> <u>No</u>	System Available 24 Hours: <input checked="" type="checkbox"/> <u>Yes</u> <input type="checkbox"/> <u>No</u>	Level of Service: <input type="checkbox"/> <u>Transport</u> <input checked="" type="checkbox"/> <u>ALS</u> <input checked="" type="checkbox"/> <u>Non-Transport</u> <input checked="" type="checkbox"/> <u>BLS</u> <input checked="" type="checkbox"/> <u>9-1-1</u> <input type="checkbox"/> <u>7-Digit</u> <input type="checkbox"/> <u>Air</u> <input type="checkbox"/> <u>CCT</u> <input type="checkbox"/> <u>Water</u> <input type="checkbox"/> <u>IFT</u>
---	---	--	---

Ownership: <input checked="" type="checkbox"/> <u>Public</u> <input type="checkbox"/> <u>Private</u>	If Public: <input checked="" type="checkbox"/> <u>Fire</u> <input type="checkbox"/> <u>Law</u> <input type="checkbox"/> <u>Other</u> Explain: _____	If Public: <input type="checkbox"/> <u>City</u> <input checked="" type="checkbox"/> <u>County</u> <input type="checkbox"/> <u>State</u> <input checked="" type="checkbox"/> <u>Fire District</u> <input type="checkbox"/> <u>Federal</u>	If Air: <input type="checkbox"/> <u>Rotary</u> <input type="checkbox"/> <u>Fixed Wing</u>	Air Classification: <input type="checkbox"/> <u>Auxiliary Rescue</u> <input type="checkbox"/> <u>Air Ambulance</u> <input type="checkbox"/> <u>ALS Rescue</u> <input type="checkbox"/> <u>BLS Rescue</u>
---	--	--	--	---

First Responder Agency

33,481	Total number of responses
<u>29,628</u>	Number of emergency responses
<u>3,853</u>	Number of non-emergency responses

Table 8: Resource Directory

Reporting Year: _____ 2015 _____

Response/Transportation/Providers

County: _____ Contra Costa County _____
Provider: _____ Crockett-Carquinez Fire Protection District _____
Response Zone: _____ Crockett-Carquinez Fire Protection District _____

Address: _____ 746 Loring Avenue _____
Number of Trucks/Apparatus in Fleet: _____ 9 _____
Crockett, CA 94525

Phone Number: _____ 510-787-2717 _____
Average Number of Engines on Duty At 12:00 p.m. (noon) on Any Given Day: _____ 1 - _____

Written Contract: <input checked="" type="checkbox"/> Yes <input type="checkbox"/> No	Medical Director: <input checked="" type="checkbox"/> Yes <input type="checkbox"/> No	System Available 24 Hours: <input checked="" type="checkbox"/> Yes <input type="checkbox"/> No	Level of Service: <input type="checkbox"/> Transport <input type="checkbox"/> ALS <input checked="" type="checkbox"/> Non-Transport <input checked="" type="checkbox"/> BLS <input type="checkbox"/> 7-Digit <input type="checkbox"/> CCT <input type="checkbox"/> IFT
			<input checked="" type="checkbox"/> 9-1-1 <input type="checkbox"/> Air <input type="checkbox"/> Ground <input type="checkbox"/> Water

Ownership: <input checked="" type="checkbox"/> Public <input type="checkbox"/> Private	If Public: <input checked="" type="checkbox"/> Fire <input type="checkbox"/> Law <input type="checkbox"/> Other Explain: _____	If Public: <input type="checkbox"/> City <input type="checkbox"/> State <input type="checkbox"/> Federal <input checked="" type="checkbox"/> County <input checked="" type="checkbox"/> Fire District	If Air: <input type="checkbox"/> Rotary <input type="checkbox"/> Fixed Wing	Air Classification: <input type="checkbox"/> Auxiliary Rescue <input type="checkbox"/> Air Ambulance <input type="checkbox"/> ALS Rescue <input type="checkbox"/> BLS Rescue
---	---	---	--	---

First Responder Agency

223 _____ Total number of responses
178 _____ Number of emergency responses
45 _____ Number of non-emergency responses

Table 8: Resource Directory

Reporting Year: 2015

Response/Transportation/Providers

County: Contra Costa County Provider: East Contra Costa Fire Protection District Response Zone: East Contra Costa Fire Protection District

Address: 134 Oak Street Number of Engines in Fleet: (3 ECCCCFD) (1 Cal Fire)

Brentwood, CA 94513

Phone Number: Phone: 925- 634-3400 Average Number of Engines on Duty At 12:00 p.m. (noon) on Any Given Day: 3

Written Contract: <input checked="" type="checkbox"/> <u>Yes</u> <input type="checkbox"/> <u>No</u>	Medical Director: <input checked="" type="checkbox"/> <u>Yes</u> <input type="checkbox"/> <u>No</u>	System Available 24 Hours: <input checked="" type="checkbox"/> <u>Yes</u> <input type="checkbox"/> <u>No</u>	Level of Service: <input type="checkbox"/> <u>Transport</u> <input type="checkbox"/> <u>ALS</u> <input checked="" type="checkbox"/> <u>Non-Transport</u> <input checked="" type="checkbox"/> <u>BLS</u>
			<input checked="" type="checkbox"/> <u>9-1-1</u> <input type="checkbox"/> <u>7-Digit</u> <input type="checkbox"/> <u>Air</u> <input type="checkbox"/> <u>CCT</u> <input type="checkbox"/> <u>Water</u> <input type="checkbox"/> <u>IFT</u>

Ownership: <input checked="" type="checkbox"/> <u>Public</u> <input type="checkbox"/> <u>Private</u>	If Public: <input checked="" type="checkbox"/> <u>Fire</u> <input type="checkbox"/> <u>Law</u> <input type="checkbox"/> <u>Other</u> Explain: _____	If Public: <input type="checkbox"/> <u>City</u> <input type="checkbox"/> <u>County</u> <input type="checkbox"/> <u>State</u> <input checked="" type="checkbox"/> <u>Fire District</u> <input type="checkbox"/> <u>Federal</u>	If Air: <input type="checkbox"/> <u>Rotary</u> <input type="checkbox"/> <u>Fixed Wing</u>	Air Classification: <input type="checkbox"/> <u>Auxiliary Rescue</u> <input type="checkbox"/> <u>Air Ambulance</u> <input type="checkbox"/> <u>ALS Rescue</u> <input type="checkbox"/> <u>BLS Rescue</u>
---	--	---	--	---

First Responder Agency

4,929	Total number of responses
<u>4,726</u>	Number of emergency responses
<u>203</u>	Number of non-emergency responses

Table 8: Resource Directory

Reporting Year: 2015

Response/Transportation/Providers

County: Contra Costa County El Cerrito Fire Department El Cerrito Fire Department
 Provider: Response Zone:

Address: 10900 San Pablo Avenue 8
El Cerrito, CA 94530 No Bariatric Equipment

Phone Number: 510-215-4450 3

Written Contract: <input checked="" type="checkbox"/> Yes <input type="checkbox"/> No	Medical Director: <input checked="" type="checkbox"/> Yes <input type="checkbox"/> No	System Available 24 Hours: <input checked="" type="checkbox"/> Yes <input type="checkbox"/> No	Level of Service: <input type="checkbox"/> Transport <input checked="" type="checkbox"/> ALS <input checked="" type="checkbox"/> 9-1-1 <input checked="" type="checkbox"/> Ground <input checked="" type="checkbox"/> Non-Transport <input type="checkbox"/> BLS <input type="checkbox"/> 7-Digit <input type="checkbox"/> Air <input type="checkbox"/> CCT <input type="checkbox"/> Water <input type="checkbox"/> IFT
---	---	--	--

Ownership: <input checked="" type="checkbox"/> Public <input type="checkbox"/> Private	If Public: <input checked="" type="checkbox"/> Fire <input type="checkbox"/> Law <input type="checkbox"/> Other Explain: _____	If Public: <input checked="" type="checkbox"/> City <input type="checkbox"/> State <input type="checkbox"/> Federal <input type="checkbox"/> County <input type="checkbox"/> Fire District	If Air: <input type="checkbox"/> Rotary <input type="checkbox"/> Fixed Wing	Air Classification: <input type="checkbox"/> Auxiliary Rescue <input type="checkbox"/> Air Ambulance <input type="checkbox"/> ALS Rescue <input type="checkbox"/> BLS Rescue
--	---	---	---	---

First Responder Agency

<u>1,747</u>	Total number of responses
<u>1,747</u>	Number of emergency responses
<u>N/A</u>	Number of non-emergency responses

Table 8: Resource Directory

Reporting Year: 2015

Response/Transportation/Providers

County: Contra Costa County **Provider:** Moraga-Orinda Fire Protection **Response Zone:** Moraga-Orinda Fire Protection

Address: 1280 Moraga Way **Number of Engines/Trucks in Fleet:** 5 Engines; 1 ALS Truck; 1 ambulance

Moraga, CA 94556

Phone

Number: Phone: 925- 258-4599

Average Number of Ambulances on Duty At 12:00 p.m. (noon) on Any Given Day: 1 Full Time Ambulance & 3 Cross Staffed Ambulances

<p>Written Contract: <input checked="" type="checkbox"/> <u>Yes</u> <input type="checkbox"/> <u>No</u></p>	<p>Medical Director: <input checked="" type="checkbox"/> <u>Yes</u> <input type="checkbox"/> <u>No</u></p>	<p>System Available 24 Hours: <input checked="" type="checkbox"/> <u>Yes</u> <input type="checkbox"/> <u>No</u></p>	<p>Level of Service: <input checked="" type="checkbox"/> <u>Transport</u> <input checked="" type="checkbox"/> <u>ALS</u> <input checked="" type="checkbox"/> <u>9-1-1</u> <input checked="" type="checkbox"/> <u>Ground</u> <input checked="" type="checkbox"/> <u>Non-Transport</u> <input checked="" type="checkbox"/> <u>BLS</u> <input type="checkbox"/> <u>7-Digit</u> <input type="checkbox"/> <u>Air</u> <input type="checkbox"/> <u>IFT</u> <input type="checkbox"/> <u>CCT</u> <input type="checkbox"/> <u>Water</u></p>
<p>Ownership: <input checked="" type="checkbox"/> <u>Public</u> <input type="checkbox"/> <u>Private</u> Explain: _____</p>	<p>If Public: <input checked="" type="checkbox"/> <u>Fire</u> <input type="checkbox"/> <u>Law</u> <input type="checkbox"/> <u>Other</u> Explain: _____</p>	<p>If Public: <input type="checkbox"/> <u>City</u> <input type="checkbox"/> <u>County</u> <input type="checkbox"/> <u>State</u> <input checked="" type="checkbox"/> <u>Fire District</u> <input type="checkbox"/> <u>Federal</u></p>	<p>If Air: <input type="checkbox"/> <u>Rotary</u> <input type="checkbox"/> <u>Fixed Wing</u></p> <p>Air Classification: <input type="checkbox"/> <u>Auxiliary Rescue</u> <input type="checkbox"/> <u>Air Ambulance</u> <input type="checkbox"/> <u>ALS Rescue</u> <input type="checkbox"/> <u>BLS Rescue</u></p>

First Responder and Transporting Agency

2,188 Total number of responses
1,626 Number of emergency responses
562 Number of non-emergency responses

1366 Total number of transports
26 Number of emergency transports
1,340 Number of non-emergency transports

Table 8: Resource Directory

Reporting Year: 2015

Response/Transportation/Providers

County: Contra Costa County Provider: Pinole Fire Department Response Zone: Pinole Fire Department

Address: 880 Tennent Avenue Number of Engines in Fleet: 4

Pinole, CA 94564

Phone Number: Phone: 510-724-8969 Average Number of Engines on Duty At 12:00 p.m. (noon) on Any Given Day: 1

Written Contract: <input checked="" type="checkbox"/> Yes <input type="checkbox"/> No	Medical Director: <input checked="" type="checkbox"/> Yes <input type="checkbox"/> No	System Available 24 Hours: <input checked="" type="checkbox"/> Yes <input type="checkbox"/> No	Level of Service: <input type="checkbox"/> Transport <input checked="" type="checkbox"/> Non-Transport <input checked="" type="checkbox"/> ALS <input checked="" type="checkbox"/> BLS <input checked="" type="checkbox"/> 9-1-1 <input type="checkbox"/> 7-Digit <input type="checkbox"/> CCT <input type="checkbox"/> IFT <input checked="" type="checkbox"/> Ground <input type="checkbox"/> Air <input type="checkbox"/> Water
---	---	--	--

Ownership: <input checked="" type="checkbox"/> Public <input type="checkbox"/> Private	If Public: <input checked="" type="checkbox"/> Fire <input type="checkbox"/> Law <input type="checkbox"/> Other Explain: _____	If Public: <input checked="" type="checkbox"/> City <input type="checkbox"/> State <input type="checkbox"/> Federal <input type="checkbox"/> County <input type="checkbox"/> Fire District	If Air: <input type="checkbox"/> Rotary <input type="checkbox"/> Fixed Wing	Air Classification: <input type="checkbox"/> Auxiliary Rescue <input type="checkbox"/> Air Ambulance <input type="checkbox"/> ALS Rescue <input type="checkbox"/> BLS Rescue
---	---	--	--	---

First Responder Agency

1,576 Total number of responses
1,283 Number of emergency responses
293 Number of non-emergency responses

Table 8: Resource Directory

Reporting Year: 2015

Response/Transportation/Providers

County: Contra Costa County Provider: Richmond Fire Department Response Zone: Richmond Fire Department

Address: 440 Civic Center Plaza Number of Engines/Apparatus in Fleet: 8
Richmond, CA 94804

Phone Number: Phone: 510-307-8031 Average Number of Engines on Duty At 12:00 p.m. (noon) on Any Given Day: 8

<p><u>Written Contract:</u> <input checked="" type="checkbox"/> <u>Yes</u> <input type="checkbox"/> <u>No</u></p>	<p><u>Medical Director:</u> <input checked="" type="checkbox"/> <u>Yes</u> <input type="checkbox"/> <u>No</u></p>	<p><u>System Available 24 Hours:</u> <input checked="" type="checkbox"/> <u>Yes</u> <input type="checkbox"/> <u>No</u></p>	<p><u>Level of Service:</u> <input type="checkbox"/> <u>Transport</u> <input type="checkbox"/> <u>ALS</u> <input checked="" type="checkbox"/> <u>9-1-1</u> <input checked="" type="checkbox"/> <u>Ground</u> <input checked="" type="checkbox"/> <u>Non-Transport</u> <input checked="" type="checkbox"/> <u>BLS</u> <input type="checkbox"/> <u>7-Digit</u> <input type="checkbox"/> <u>Air</u> <input type="checkbox"/> <u>IFT</u> <input type="checkbox"/> <u>CCT</u> <input type="checkbox"/> <u>Water</u></p>
<p><u>Ownership:</u> <input checked="" type="checkbox"/> <u>Public</u> <input type="checkbox"/> <u>Private</u></p>	<p><u>If Public:</u> <input checked="" type="checkbox"/> <u>Fire</u> <input type="checkbox"/> <u>Law</u> <input type="checkbox"/> <u>Other</u> Explain: _____</p>	<p><u>If Public:</u> <input checked="" type="checkbox"/> <u>City</u> <input type="checkbox"/> <u>County</u> <input type="checkbox"/> <u>State</u> <input type="checkbox"/> <u>Fire District</u> <input type="checkbox"/> <u>Federal</u></p>	<p><u>If Air:</u> <input type="checkbox"/> <u>Rotary</u> <input type="checkbox"/> <u>Fixed Wing</u></p> <p><u>Air Classification:</u> <input type="checkbox"/> <u>Auxiliary Rescue</u> <input type="checkbox"/> <u>Air Ambulance</u> <input type="checkbox"/> <u>ALS Rescue</u> <input type="checkbox"/> <u>BLS Rescue</u></p>

First Responder Agency

8,194 Total number of responses
8,194 Number of emergency responses
N/A Number of non-emergency responses

Table 8: Resource Directory

Reporting Year: 2015

Response/Transportation/Providers

County: Contra Costa County Provider: Rodeo-Hercules Fire Protection District Response Zone: Rodeo-Hercules Fire Protection
 Address: 1680 Refugio Valley Road District
Hercules, CA 94547 Number of Engines in Fleet: 2
 Phone Number: Phone: 510-799-4561 Average Number of Engines on Duty At 12:00 p.m. (noon) on Any Given Day: 2

<p><u>Written Contract:</u> <input checked="" type="checkbox"/> <u>Yes</u> <input type="checkbox"/> <u>No</u></p>	<p><u>Medical Director:</u> <input checked="" type="checkbox"/> <u>Yes</u> <input type="checkbox"/> <u>No</u></p>	<p><u>System Available 24 Hours:</u> <input checked="" type="checkbox"/> <u>Yes</u> <input type="checkbox"/> <u>No</u></p>	<p><u>Level of Service:</u> <input type="checkbox"/> <u>Transport</u> <input checked="" type="checkbox"/> <u>ALS</u> <input checked="" type="checkbox"/> <u>9-1-1</u> <input checked="" type="checkbox"/> <u>Ground</u> <input checked="" type="checkbox"/> <u>Non-Transport</u> <input checked="" type="checkbox"/> <u>BLS</u> <input type="checkbox"/> <u>7-Digit</u> <input type="checkbox"/> <u>Air</u> <input type="checkbox"/> <u>IFT</u> <input type="checkbox"/> <u>CCT</u> <input type="checkbox"/> <u>Water</u></p>
<p><u>Ownership:</u> <input checked="" type="checkbox"/> <u>Public</u> <input type="checkbox"/> <u>Private</u></p>	<p><u>If Public:</u> <input checked="" type="checkbox"/> <u>Fire</u> <input type="checkbox"/> <u>Law</u> <input type="checkbox"/> <u>Other</u> Explain: _____</p>	<p><u>If Public:</u> <input checked="" type="checkbox"/> <u>City</u> <input type="checkbox"/> <u>County</u> <input type="checkbox"/> <u>State</u> <input checked="" type="checkbox"/> <u>Fire District</u> <input type="checkbox"/> <u>Federal</u></p>	<p><u>If Air:</u> <input type="checkbox"/> <u>Rotary</u> <input type="checkbox"/> <u>Fixed Wing</u></p> <p><u>Air Classification:</u> <input type="checkbox"/> <u>Auxiliary Rescue</u> <input type="checkbox"/> <u>Air Ambulance</u> <input type="checkbox"/> <u>ALS Rescue</u> <input type="checkbox"/> <u>BLS Rescue</u></p>

First Responder Agency

1,507 Total number of responses
1,440 Number of emergency responses
67 Number of non-emergency responses

Table 8: Resource Directory

Reporting Year: 2015

Response/Transportation/Providers

County: Contra Costa County **Provider:** San Ramon Valley Fire Protection District **Response Zone:** San Ramon Valley Fire Protection District

Address: 1500 Bollinger Canyon Road **Number of Ambulance/Apparatus in Fleet:** 9 Ambulances/38 units-

San Ramon, CA 94583

Phone Number: Phone: 925- 838-6680 **Average Number of Ambulances on Duty At 12:00 p.m. (noon) on Any Given Day:** 5 Ambulances/14 units

<u>Written Contract:</u> <input checked="" type="checkbox"/> Yes <input type="checkbox"/> No	<u>Medical Director:</u> <input checked="" type="checkbox"/> Yes <input type="checkbox"/> No	<u>System Available 24 Hours:</u> <input checked="" type="checkbox"/> Yes <input type="checkbox"/> No	<u>Level of Service:</u> <input checked="" type="checkbox"/> Transport <input checked="" type="checkbox"/> ALS <input checked="" type="checkbox"/> 9-1-1 <input checked="" type="checkbox"/> Ground <input checked="" type="checkbox"/> Non-Transport <input checked="" type="checkbox"/> BLS <input type="checkbox"/> 7-Digit <input type="checkbox"/> Air <input type="checkbox"/> CCT <input type="checkbox"/> Water <input type="checkbox"/> IFT
--	--	---	--

<u>Ownership:</u> <input checked="" type="checkbox"/> Public <input type="checkbox"/> Private	<u>If Public:</u> <input checked="" type="checkbox"/> Fire <input type="checkbox"/> Law <input type="checkbox"/> Other Explain: _____	<u>If Public:</u> <input type="checkbox"/> City <input type="checkbox"/> County <input type="checkbox"/> State <input checked="" type="checkbox"/> Fire District <input type="checkbox"/> Federal	<u>If Air:</u> <input type="checkbox"/> Rotary <input type="checkbox"/> Fixed Wing	<u>Air Classification:</u> <input type="checkbox"/> Auxiliary Rescue <input type="checkbox"/> Air Ambulance <input type="checkbox"/> ALS Rescue <input type="checkbox"/> BLS Rescue
--	---	--	---	--

First Responder and Transporting Agency

6,323 Total number of responses
4621 Number of emergency responses
1702 Number of non-emergency responses

3,734 Total number of transports
381 Number of emergency transports
3,353 Number of non-emergency transports

Table 8: Resource Directory

Reporting Year: 2015

Response/Transportation/Providers

County: Contra Costa County Provider: CALSTAR Air Ambulance Response Zone: CALSTAR Air Ambulance

Address: 177 John Glenn Drive Number of Helicopters in Fleet: 1

Concord, CA 94520

Phone

Average Number of Helicopters on Duty
At 12:00 p.m. (noon) on Any Given Day:

Number: 925- 798-7670 1

<p>Written Contract: <input checked="" type="checkbox"/> <u>Yes</u> <input type="checkbox"/> <u>No</u></p>	<p>Medical Director: <input checked="" type="checkbox"/> <u>Yes</u> <input type="checkbox"/> <u>No</u></p>	<p>System Available 24 Hours: <input checked="" type="checkbox"/> <u>Yes</u> <input type="checkbox"/> <u>No</u></p>	<p>Level of Service: <input checked="" type="checkbox"/> <u>Transport</u> <input checked="" type="checkbox"/> <u>ALS</u> <input type="checkbox"/> <u>9-1-1</u> <input type="checkbox"/> <u>Ground</u> <input type="checkbox"/> <u>Non-Transport</u> <input type="checkbox"/> <u>BLS</u> <input type="checkbox"/> <u>7-Digit</u> <input checked="" type="checkbox"/> <u>Air</u> <input type="checkbox"/> <u>Water</u> <input checked="" type="checkbox"/> <u>CCT</u> <input checked="" type="checkbox"/> <u>IFT</u></p>
<p>Ownership: <input type="checkbox"/> <u>Public</u> <input checked="" type="checkbox"/> <u>Private</u></p>	<p>If Public: <input type="checkbox"/> <u>Fire</u> <input type="checkbox"/> <u>Law</u> <input type="checkbox"/> <u>Other</u> Explain: _____</p>	<p>If Public: <input type="checkbox"/> <u>City</u> <input type="checkbox"/> <u>County</u> <input type="checkbox"/> <u>State</u> <input type="checkbox"/> <u>Fire District</u> <input type="checkbox"/> <u>Federal</u></p>	<p>If Air: <input checked="" type="checkbox"/> <u>Rotary</u> <input checked="" type="checkbox"/> <u>Fixed Wing</u></p> <p>Air Classification: <input type="checkbox"/> <u>Auxiliary Rescue</u> <input checked="" type="checkbox"/> <u>Air Ambulance</u> <input type="checkbox"/> <u>ALS Rescue</u> <input type="checkbox"/> <u>BLS Rescue</u></p>

Air Ambulance Services

475 Total number of responses
475 Number of emergency responses
0 Number of non-emergency responses

70 Total number of transports
70 Number of emergency transports
0 Number of non-emergency transports

Table 8: Resource Directory

Reporting Year: 2015

Response/Transportation/Providers

County: Contra Costa County Provider: REACH Air Medical Services Response Zone: REACH Air Medical Services

Address: 5005 Marsh Drive Number of Helicopters in Fleet: 1

Concord, CA 94520

Phone Number: 925-691-2099 Average Number of Helicopters on Duty At 12:00 p.m. (noon) on Any Given Day: 1-Concord

<p>Written Contract: <input checked="" type="checkbox"/> <u>Yes</u> <input type="checkbox"/> <u>No</u></p>	<p>Medical Director: <input checked="" type="checkbox"/> <u>Yes</u> <input type="checkbox"/> <u>No</u></p>	<p>System Available 24 Hours: <input checked="" type="checkbox"/> <u>Yes</u> <input type="checkbox"/> <u>No</u></p>	<p>Level of Service: <input checked="" type="checkbox"/> <u>Transport</u> <input checked="" type="checkbox"/> <u>ALS</u> <input checked="" type="checkbox"/> <u>9-1-1</u> <input type="checkbox"/> <u>Ground</u> <input type="checkbox"/> <u>Non-Transport</u> <input type="checkbox"/> <u>BLS</u> <input type="checkbox"/> <u>7-Digit</u> <input checked="" type="checkbox"/> <u>Air</u> <input type="checkbox"/> <u>Water</u> <input checked="" type="checkbox"/> <u>CCT</u> <input checked="" type="checkbox"/> <u>IFT</u></p>
<p>Ownership: <input type="checkbox"/> <u>Public</u> <input checked="" type="checkbox"/> <u>Private</u></p>	<p>If Public: <input type="checkbox"/> <u>Fire</u> <input type="checkbox"/> <u>Law</u> <input type="checkbox"/> <u>Other</u> Explain: _____</p>	<p>If Public: <input type="checkbox"/> <u>City</u> <input type="checkbox"/> <u>County</u> <input type="checkbox"/> <u>State</u> <input type="checkbox"/> <u>Fire District</u> <input type="checkbox"/> <u>Federal</u></p>	<p>If Air: <input checked="" type="checkbox"/> <u>Rotary</u> <input checked="" type="checkbox"/> <u>Fixed Wing</u></p> <p>Air Classification: <input type="checkbox"/> <u>Auxiliary Rescue</u> <input checked="" type="checkbox"/> <u>Air Ambulance</u> <input type="checkbox"/> <u>ALS Rescue</u> <input type="checkbox"/> <u>BLS Rescue</u></p>

Air Ambulance Services

<u>447</u>	Total number of responses	<u>156</u>	Total number of transports
<u>359</u>	Number of emergency responses	<u>81</u>	Number of emergency transports
<u>88</u>	Number of non-emergency responses (IFT)	<u>75</u>	Number of non-emergency transports (IFT)

Table 9: Resources Directory

Facilities

Reporting Year: 2015

County: Contra Costa County

Facility: Contra Costa Regional Medical Center Telephone Number: 925-370-5000
 Address: 2500 Alhambra Avenue
Martinez, CA 94553

<u>Written Contract:</u> <input checked="" type="checkbox"/> <u>Yes</u> <input type="checkbox"/> <u>No</u>	<u>Service:</u> <input type="checkbox"/> Referral Emergency <input type="checkbox"/> Standby Emergency <input checked="" type="checkbox"/> <u>Basic Emergency</u> <input type="checkbox"/> Comprehensive Emergency	<u>Base Hospital:</u> <input type="checkbox"/> <u>Yes</u> <input checked="" type="checkbox"/> <u>X</u> <input type="checkbox"/> <u>No</u>	<u>Burn Center:</u> <input type="checkbox"/> <u>Yes</u> <input checked="" type="checkbox"/> <u>X</u> <input type="checkbox"/> <u>No</u>
---	--	--	--

Pediatric Critical Care Center <input type="checkbox"/> <u>Yes</u> <input checked="" type="checkbox"/> <u>X</u> <input type="checkbox"/> <u>No</u> EDAP <input type="checkbox"/> <u>Yes</u> <input checked="" type="checkbox"/> <u>X</u> <input type="checkbox"/> <u>No</u> PICU <input type="checkbox"/> <u>Yes</u> <input checked="" type="checkbox"/> <u>X</u> <input type="checkbox"/> <u>No</u>	<u>Trauma Center:</u> <input type="checkbox"/> <u>Yes</u> <input checked="" type="checkbox"/> <u>X</u> <input type="checkbox"/> <u>No</u>	<u>If Trauma Center what level:</u> <input type="checkbox"/> Level I <input type="checkbox"/> Level II <input type="checkbox"/> Level III <input type="checkbox"/> Level IV
--	--	---

<u>STEMI Center:</u> <input type="checkbox"/> <u>Yes</u> <input checked="" type="checkbox"/> <u>X</u> <input type="checkbox"/> <u>No</u>	<u>Stroke Center:</u> <input type="checkbox"/> <u>Yes</u> <input checked="" type="checkbox"/> <u>X</u> <input type="checkbox"/> <u>No</u>
---	--

Table 9: Resources Directory

Reporting Year: 2015 Facility Closed Permanently on April 21, 2015

Facilities

County: Contra Costa County

Facility: Doctors Medical Center, San Pablo Telephone Number: 510-970-5000
Address: 2000 Vale Road
San Pablo, CA 94806

Written Contract: X <u>Yes</u> <input type="checkbox"/> <u>No</u>	Service: <input type="checkbox"/> Referral Emergency X Standby Emergency ¹⁹ <input type="checkbox"/> <input type="checkbox"/> Basic Emergency <input type="checkbox"/> Comprehensive Emergency	Base Hospital: <input type="checkbox"/> <u>Yes</u> <input checked="" type="checkbox"/> <u>No</u>	Burn Center: <input type="checkbox"/> <u>Yes</u> <input checked="" type="checkbox"/> <u>No</u>
---	---	--	--

Pediatric Critical Care Center EDAP PICU	Trauma Center: <input type="checkbox"/> <u>Yes</u> <input checked="" type="checkbox"/> <u>No</u> <input type="checkbox"/> <u>Yes</u> <input checked="" type="checkbox"/> <u>No</u> <input type="checkbox"/> <u>Yes</u> <input checked="" type="checkbox"/> <u>No</u>	If Trauma Center what level: <input type="checkbox"/> Level I <input type="checkbox"/> Level II <input type="checkbox"/> Level III <input type="checkbox"/> Level IV
---	--	---

STEMI Center: <input type="checkbox"/> <u>Yes</u> <input checked="" type="checkbox"/> <u>No</u>	Stroke Center: <input type="checkbox"/> <u>Yes</u> <input checked="" type="checkbox"/> <u>No</u>
---	--

¹⁹ Doctor's Medical Center (DMC) stopped receiving emergency ambulance traffic on 8/7/2014. They were officially downgraded by State Licensing and Accreditation to a standby emergency department on 8/25/2014 and their STEMI and Stroke Center Designation was suspended as of 8/7/2014.

Table 9: Resources Directory

Reporting Year: 2015

Facilities

County: Contra Costa County

Facility: John Muir Health, Concord Campus Telephone Number: 925-682-8200

Address: 2540 East Street
Concord, CA 94520

<p><u>Written Contract:</u> <input checked="" type="checkbox"/> <u>Yes</u> <input type="checkbox"/> <u>No</u></p>	<p><u>Service:</u> <input type="checkbox"/> Referral Emergency <input type="checkbox"/> Standby Emergency <input checked="" type="checkbox"/> <u>Basic Emergency</u> <input type="checkbox"/> Comprehensive Emergency</p>	<p><u>Base Hospital:</u> <input type="checkbox"/> <u>Yes</u> <input checked="" type="checkbox"/> <u>No</u></p>	<p><u>Burn Center:</u> <input type="checkbox"/> <u>Yes</u> <input checked="" type="checkbox"/> <u>No</u></p>
--	---	---	---

<p>Pediatric Critical Care Center <input type="checkbox"/> <u>Yes</u> <input checked="" type="checkbox"/> <u>No</u> EDAP <input type="checkbox"/> <u>Yes</u> <input checked="" type="checkbox"/> <u>No</u> PICU <input type="checkbox"/> <u>Yes</u> <input checked="" type="checkbox"/> <u>No</u></p>	<p><u>Trauma Center:</u> <input type="checkbox"/> <u>Yes</u> <input checked="" type="checkbox"/> <u>No</u></p>	<p><u>If Trauma Center what level:</u> <input type="checkbox"/> Level I <input type="checkbox"/> Level II <input type="checkbox"/> Level III <input type="checkbox"/> Level IV</p>
---	---	--

<p><u>STEMI Center:</u> <input checked="" type="checkbox"/> <u>Yes</u> <input type="checkbox"/> <u>No</u></p>	<p><u>Stroke Center:</u> <input checked="" type="checkbox"/> <u>Yes</u> <input type="checkbox"/> <u>No</u></p>
--	---

Table 9: Resources Directory

Reporting Year: 2015

Facilities

County: Contra Costa County

Facility: John Muir Health, Walnut Creek Campus Telephone Number: 925-939-3000
Address: 1601 Ygnacio Valley Road
Walnut Creek, CA 94598

<p><u>Written Contract:</u> <input checked="" type="checkbox"/> <u>Yes</u> <input type="checkbox"/> <u>No</u></p>	<p><u>Service:</u> <input type="checkbox"/> Referral Emergency <input type="checkbox"/> Standby Emergency <input checked="" type="checkbox"/> <u>Basic Emergency</u> <input type="checkbox"/> Comprehensive Emergency</p>	<p><u>Base Hospital:</u> <input checked="" type="checkbox"/> <u>Yes</u> <input type="checkbox"/> <u>No</u></p>	<p><u>Burn Center:</u> <input type="checkbox"/> <u>Yes</u> <input checked="" type="checkbox"/> <u>No</u></p>
---	--	--	--

<p>Pediatric Critical Care Center EDAP PICU</p> <p><input type="checkbox"/> <u>Yes</u> <input checked="" type="checkbox"/> <u>No</u> <input type="checkbox"/> <u>Yes</u> <input checked="" type="checkbox"/> <u>No</u> <input checked="" type="checkbox"/> <u>Yes</u> <input type="checkbox"/> <u>No</u></p>	<p><u>Trauma Center:</u> <input checked="" type="checkbox"/> <u>Yes</u> <input type="checkbox"/> <u>No</u></p>	<p><u>If Trauma Center what level:</u> <input type="checkbox"/> Level I <input checked="" type="checkbox"/> <u>Level II</u> <input type="checkbox"/> Level III <input type="checkbox"/> Level IV</p>
---	--	---

<p><u>STEMI Center:</u> <input checked="" type="checkbox"/> <u>Yes</u> <input type="checkbox"/> <u>No</u></p>	<p><u>Stroke Center:</u> <input checked="" type="checkbox"/> <u>Yes</u> <input type="checkbox"/> <u>No</u></p>
---	--

Table 9: Resources Directory

Reporting Year: 2015

Facilities

County: Contra Costa County

Facility: Kaiser Permanente Medical Center, Antioch Telephone Number: 925-813-6500
Address: 5601 Deer Valley Road
Antioch, CA 94531

Written Contract: <input checked="" type="checkbox"/> <u>Yes</u> <input type="checkbox"/> <u>No</u>	Service: <input type="checkbox"/> Referral Emergency <input type="checkbox"/> Standby Emergency <input checked="" type="checkbox"/> <u>Basic Emergency</u> <input type="checkbox"/> Comprehensive Emergency	Base Hospital: <input type="checkbox"/> <u>Yes</u> <input checked="" type="checkbox"/> <u>No</u>	Burn Center: <input type="checkbox"/> <u>Yes</u> <input checked="" type="checkbox"/> <u>No</u>
---	--	--	--

Pediatric Critical Care Center EDAP PICU	Trauma Center: <input type="checkbox"/> <u>Yes</u> <input checked="" type="checkbox"/> <u>No</u>	If Trauma Center what level: <input type="checkbox"/> Level I <input type="checkbox"/> Level II <input type="checkbox"/> Level III <input type="checkbox"/> Level IV
---	--	---

STEMI Center: <input type="checkbox"/> <u>Yes</u> <input checked="" type="checkbox"/> <u>No</u>	Stroke Center: <input checked="" type="checkbox"/> <u>Yes</u> <input type="checkbox"/> <u>No</u>
---	--

Table 9: Resources Directory

Reporting Year: 2015

Facilities

County: Contra Costa County

Facility: Kaiser Permanente Med. Ctr., Walnut Creek Telephone Number: 925-295-4000

Address: 1425 South Main Street
Walnut Creek, CA 94596

<p><u>Written Contract:</u> <input type="checkbox"/> Yes <input type="checkbox"/> No</p>	<p><u>Service:</u> <input type="checkbox"/> Referral Emergency <input type="checkbox"/> Standby Emergency <input checked="" type="checkbox"/> Basic Emergency <input type="checkbox"/> Comprehensive Emergency</p>	<p><u>Base Hospital:</u> <input type="checkbox"/> Yes <input checked="" type="checkbox"/> No</p>	<p><u>Burn Center:</u> <input type="checkbox"/> Yes <input checked="" type="checkbox"/> No</p>
--	--	--	--

<p>Pediatric Critical Care Center EDAP <input type="checkbox"/> Yes <input checked="" type="checkbox"/> No PICU <input type="checkbox"/> Yes <input checked="" type="checkbox"/> No</p>	<p><u>Trauma Center:</u> <input type="checkbox"/> Yes <input checked="" type="checkbox"/> No</p>	<p><u>If Trauma Center what level:</u> <input type="checkbox"/> Level I <input type="checkbox"/> Level II <input type="checkbox"/> Level III <input type="checkbox"/> Level IV</p>
--	--	---

<p><u>STEMI Center:</u> <input checked="" type="checkbox"/> Yes <input type="checkbox"/> No</p>	<p><u>Stroke Center:</u> <input checked="" type="checkbox"/> Yes <input type="checkbox"/> No</p>
---	--

Table 9: Resources Directory

Reporting Year: 2015

Facilities

County: Contra Costa County

Facility: Kaiser Permanente Med. Ctr., Richmond Telephone Number: 510-307-1500

Address: 901 Nevin Avenue
Richmond, CA 94801

<p><u>Written Contract:</u> <input checked="" type="checkbox"/> Yes <input type="checkbox"/> No</p>	<p><u>Service:</u> <input type="checkbox"/> Referral Emergency <input type="checkbox"/> Standby Emergency <input checked="" type="checkbox"/> Basic Emergency <input type="checkbox"/> Comprehensive Emergency</p>	<p><u>Base Hospital:</u> <input type="checkbox"/> Yes <input checked="" type="checkbox"/> No</p>	<p><u>Burn Center:</u> <input type="checkbox"/> Yes <input checked="" type="checkbox"/> No</p>
---	--	--	--

<p>Pediatric Critical Care Center EDAP PICU</p> <p><input type="checkbox"/> Yes <input checked="" type="checkbox"/> No <input type="checkbox"/> Yes <input checked="" type="checkbox"/> No <input type="checkbox"/> Yes <input checked="" type="checkbox"/> No</p>	<p><u>Trauma Center:</u> <input type="checkbox"/> Yes <input checked="" type="checkbox"/> No</p>	<p><u>If Trauma Center what level:</u> <input type="checkbox"/> Level I <input type="checkbox"/> Level II <input type="checkbox"/> Level III <input type="checkbox"/> Level IV</p>
---	--	---

<p><u>STEMI Center:</u> <input type="checkbox"/> Yes <input checked="" type="checkbox"/> No</p>	<p><u>Stroke Center:</u> <input checked="" type="checkbox"/> Yes <input type="checkbox"/> No</p>
---	--

Table 9: Resources Directory

Reporting Year: 2015

Facilities

County: Contra Costa County

Facility: San Ramon Regional Medical Center
 Address: 6001 Norris Canyon Road
San Ramon, CA 94583

Telephone Number: 925-275-9200

<p><u>Written Contract:</u> <input checked="" type="checkbox"/> <u>Yes</u> <input type="checkbox"/> <u>No</u></p>	<p><u>Service:</u> <input type="checkbox"/> Referral Emergency <input type="checkbox"/> Standby Emergency <input checked="" type="checkbox"/> <u>Basic Emergency</u> <input type="checkbox"/> Comprehensive Emergency</p>	<p><u>Base Hospital:</u> <input type="checkbox"/> <u>Yes</u> <input checked="" type="checkbox"/> <u>No</u></p>	<p><u>Burn Center:</u> <input type="checkbox"/> <u>Yes</u> <input checked="" type="checkbox"/> <u>No</u></p>
--	---	---	---

<p>Pediatric Critical Care Center EDAP PICU</p>	<p><u>Trauma Center:</u> <input type="checkbox"/> <u>Yes</u> <input checked="" type="checkbox"/> <u>No</u></p>	<p><u>If Trauma Center what level:</u> <input type="checkbox"/> Level I <input type="checkbox"/> Level II <input type="checkbox"/> Level III <input type="checkbox"/> Level IV</p>
---	---	--

<p><u>STEMI Center:</u> <input checked="" type="checkbox"/> <u>Yes</u> <input type="checkbox"/> <u>No</u></p>	<p><u>Stroke Center:</u> <input checked="" type="checkbox"/> <u>Yes</u> <input type="checkbox"/> <u>No</u></p>
--	---

Table 9: Resources Directory

Reporting Year: 2015

Facilities

County: Contra Costa County

Facility: Sutter Delta Medical Center Telephone Number: 925-779-7200

Address: 3901 Lone Tree Way
Antioch, CA 94509

<p><u>Written Contract:</u></p> <p>X <u>Yes</u> <input type="checkbox"/> <u>No</u></p>	<p><u>Service:</u></p> <p><input type="checkbox"/> Referral Emergency <input type="checkbox"/> Standby Emergency</p> <p>X <u>Basic Emergency</u> <input type="checkbox"/> Comprehensive Emergency</p>	<p><u>Base Hospital:</u></p> <p><input type="checkbox"/> Yes X <u>No</u></p>	<p><u>Burn Center:</u></p> <p><input type="checkbox"/> Yes X <u>No</u></p>
--	---	--	--

<p>Pediatric Critical Care Center</p> <p>EDAP <input type="checkbox"/> Yes X <u>No</u></p> <p>PICU <input type="checkbox"/> Yes X <u>No</u></p>	<p><u>Trauma Center:</u></p> <p><input type="checkbox"/> Yes X <u>No</u></p>	<p><u>If Trauma Center what level:</u></p> <p><input type="checkbox"/> Level I <input type="checkbox"/> Level II</p> <p><input type="checkbox"/> Level III <input type="checkbox"/> Level IV</p>
---	--	--

<p><u>STEMI Center:</u></p> <p>X <u>Yes</u> <input type="checkbox"/> <u>No</u></p>	<p><u>Stroke Center:</u></p> <p><input type="checkbox"/> Yes X <u>No</u></p>
--	--

TABLE 10: RESOURCES DIRECTORY -- Approved Training Programs

County: Contra Costa County

Reporting Year: 2015

Training Institution:	Los Medanos College	Telephone Number:	925-473-7752
Address:	2700 East Leland Road Pittsburg, CA 94563		
Student Eligibility:	Open to _____ The public	Program Level	EMT
	Cost of Program:		
	Basic: \$46/unit	Number of students completing training per year:	200
	Refresher: \$46/unit	Initial training:	25
		Refresher: No Classes Due to State Budget Cuts	0
		Continuing Education:	5/31/2016
		Expiration Date:	
	Number of courses:	Initial training:	5
		Refresher:	2
	Continuing Education:	Continuing Education:	0

TABLE 10: RESOURCES DIRECTORY -- Approved Training Programs

County: Contra Costa County

Reporting Year: 2015

Training Institution:	Mt. Diablo Adult Education		Telephone Number:	(925) 685-7340
Address:	1266 San Carlos Avenue			
	Concords, CA 94518			
Student Eligibility:	Open to General Public	Cost of Program:	Program Level EMT	
		Basic: \$1445	Number of students completing training per year:	
		Refresher: \$240	Initial training	8
			Refresher:	0
			Continuing Education:	2
			Expiration Date:	3/31/2017
			Number of courses:	1
			Initial Training:	0
			Refresher:	1
			Continuing Education:	

TABLE 10: RESOURCES DIRECTORY -- Approved Training Programs

County: Contra Costa County

Reporting Year: 2015

Telephone Number: 925-947-4438

Training Institution: John Muir Health, Walnut Creek
Address: 1601 Ygnacio Valley Road
Walnut Creek, CA 94598

Program Level: MICN Training

Student Eligibility:

- a. BLS
- b. ACLS
- c. PALS
- d. TNCC
- e. Minimum 2 years ED. Exper.
- f. In-House Training only

Cost of Program:
 Basic: \$0.00
 Refresher: \$0.00

Number of students completing training per year:

Initial Training: 5
 Refresher: 0
 Continuing Education: 24 Hours
 Expiration Date: 9/30/2015
 Number of Courses: (annually in the spring) 1
 Initial Training Refresher: ongoing
 Continuing Education: TNCC PALS, ACLS, Trauma, Other (All provided in house.)

TABLE 10: RESOURCES DIRECTORY -- Approved Training Programs

County: Contra Costa County

Reporting Year: 2015

Training Institution: Contra Costa College
Address: 2600 Mission Bell Drive
San Pablo, CA 94806

Telephone Number: 510-215-3865

Program Level: EMT Training

Student Eligibility: Open to Public

Cost of Program:

Basic: \$276
Refresher: \$46/unit

Number of students completing training per year:

Initial Training: 50
Refresher: 0
Continuing Education: 0
Expiration Date: 8/31/2019

Number of Courses:

Initial Training: 2
Refresher: 0
Continuing Education: 0

TABLE 11: RESOURCES DIRECTORY -- Dispatch Agency

County: Contra Costa County

Reporting Year: 2015

<p>Name: _____ Address: _____ _____ _____</p>	<p>San Ramon Valley Fire Dispatch 800 San Ramon Valley Road Danville, CA 94526</p>	<p>Primary Contact: Denise Pangelinan Communications Center Manager</p>
<p>Telephone Number: _____</p>	<p>925-838-6645</p>	
<p>Written Contract: <input checked="" type="checkbox"/> Yes <input type="checkbox"/> No</p>	<p>Medical Director: <input checked="" type="checkbox"/> Yes <input type="checkbox"/> No</p>	<p>Number of Personnel Providing Services: <u>13</u> EMD Training _____ ALS _____ BLS _____ LALS _____ Other _____</p>
<p>Ownership: <input checked="" type="checkbox"/> Public <input type="checkbox"/> Private</p>	<p>If Public: <input checked="" type="checkbox"/> Fire <input type="checkbox"/> Law <input type="checkbox"/> Other</p>	<p>If Public: <input type="checkbox"/> City <input type="checkbox"/> County <input type="checkbox"/> State <input checked="" type="checkbox"/> Fire District <input type="checkbox"/> Federal</p>
<p>Explain: _____</p>		

TABLE 11: RESOURCES DIRECTORY -- Dispatch Agency

County: Contra Costa County

Reporting Year: _____

2015

Name:	Contra Costa Sheriff's Office	Primary Contact:	Gale Bowen
Address:	40 Glacier Drive Martinez, CA 94553		Communications Center Director
Telephone Number:	925-313-2454		
Written Contract: X <u>Yes</u> <input type="checkbox"/> No	Medical Director: X <u>Yes</u> <input type="checkbox"/> No	Number of Personnel Providing Services: EMD Training <u>48</u> ²⁰ EMT-D _____ ALS _____ BLS _____ LALS _____ Other _____	
Ownership: X <u>Public</u> <input type="checkbox"/> Private	If Public: <input type="checkbox"/> Fire X <u>Law</u> <input type="checkbox"/> Other Explain: _____	If Public: <input type="checkbox"/> City X <u>County</u> <input type="checkbox"/> State <input type="checkbox"/> Fire District <input type="checkbox"/> Federal	

²⁰ Average staffing 22 dispatchers/supervisors per day

TABLE 11: RESOURCES DIRECTORY -- Dispatch Agency

County: Contra Costa County Reporting Year: 2015

NOTE: Make copies to add pages as needed. Complete information for each provider by county.

Name:	Contra Costa Fire Dispatch	Primary Contact:	Kiel Lamar
Address:	2010 Geary Road Pleasant Hill, CA 94523		Communications Specialist
Telephone Number:	925-941-3550		
Written Contract:	Medical Director: X <u>Yes</u> <input type="checkbox"/> No	Number of Personnel Providing Services: 18 <u>EMD Training</u> <input type="checkbox"/> EMT-D <input type="checkbox"/> ALS <input type="checkbox"/> BLS <input type="checkbox"/> LALS <input type="checkbox"/> Other	
Ownership: X <u>Public</u> <input type="checkbox"/> Private	If Public: X <u>Fire</u> <input type="checkbox"/> Law <input type="checkbox"/> Other Explain: _____	If Public: <input type="checkbox"/> City <input type="checkbox"/> County <input type="checkbox"/> State <input checked="" type="checkbox"/> <u>Fire District</u> <input type="checkbox"/> Federal	

TABLE 11: RESOURCES DIRECTORY -- Dispatch Agency

County: Contra Costa County

Reporting Year: 2015

NOTE: Make copies to add pages as needed. Complete information for each provider by county.

Name:	Richmond Communications Center	Primary Contact:	Michael Schlemmer, Communication Specialist
Address:	<u>326 27th Street</u> <u>Richmond, CA 94804</u>		
Telephone Number:	510-620-6660		
Written Contract:	Medical Director: <input checked="" type="checkbox"/> <u>Day-to-Day</u> <input type="checkbox"/> No <input type="checkbox"/> Yes <input checked="" type="checkbox"/> <u>Disaster</u>	Number of Personnel Providing Services:	<u>22</u> EMD Training <input type="checkbox"/> EMT-D <input type="checkbox"/> ALS <input type="checkbox"/> Yes <input checked="" type="checkbox"/> <u>No</u> BLS <input type="checkbox"/> LALS <input type="checkbox"/> Other
Ownership:	<input checked="" type="checkbox"/> <u>Public</u> <input type="checkbox"/> Private	If Public:	<input checked="" type="checkbox"/> <u>City</u> <input type="checkbox"/> County <input type="checkbox"/> State <input type="checkbox"/> Fire District <input type="checkbox"/> Federal Explain: _____

AMBULANCE ZONE SUMMARY FORM: ERA I (2015)

Local EMS Agency or County Name:

Contra Costa County

Area or subarea (Zone) Name or Title:

ERA I

Name of Current Provider(s):

American Medical Response

Area or sub area (Zone) Geographic Description:

ERA-I includes the cities of El Cerrito, Richmond, Pinole, Hercules, San Pablo, Kensington, Martinez, Pleasant Hill, Lafayette, and Walnut Creek west of Highway 680 and adjacent to unincorporated areas, excluding that portion of ERA I included in the Moraga-Orinda Fire Protection District.

Statement of Exclusivity, Exclusive or non-Exclusive (HS 1797.6):

Exclusive.

Type of Exclusivity, "Emergency Ambulance", "ALS", or "LALS" (HS 1797.85):

Emergency Ambulance, ALS, 9-1-1 emergency response.

Method to achieve Exclusivity, if applicable (HS 1797.224):

Competitively-determined. Periodic Request for Proposal (RFP) and review process held approximately every 10 years. EMS Authority approved an RFP August 10, 2004. An exclusive 9-1-1 contract with American Medical Response went into effect as of July 1, 2005 with an extension approved by the Contra Costa Board of Supervisors (BOS) to June 30, 2014. On March 11, 2013 the BOS extended the contract through December 31, 2015 in accordance with the County Local Ambulance Ordinance number 83-28 regulation adopted June 2, 1989. During this period a competitive RFP which included a new EMS system design was conducted with the approval of the EMSA. The new EMS system design went into effect January 1, 2016 and Ambulance Zone Summary of changes submitted to the EMSA.

AMBULANCE ZONE SUMMARY FORM: ERA II (2015)

<u>Local EMS Agency or County Name:</u> Contra Costa County
<u>Area or subarea (Zone) Name or Title:</u> ERA II
<u>Name of Current Provider(s):</u> American Medical Response
<u>Area or sub area (Zone) Geographic Description:</u> ERA-II includes the cities of Clayton, Concord, Walnut Creek, east of Highway 680 and adjacent to unincorporated areas.
<u>Statement of Exclusivity, Exclusive or non-Exclusive (HS 1797.6):</u> Exclusive
<u>Type of Exclusivity, "Emergency Ambulance", "ALS", or "LALS" (HS 1797.85):</u> Emergency Ambulance - ALS, 9-1-1 Emergency Response
<u>Method to achieve Exclusivity, if applicable (HS 1797.224):</u> Competitively-determined. Periodic Request for Proposal and review process held approximately every 10 years. EMS Authority approved an RFP August 10, 2004. An exclusive 9-1-1 contract with American Medical Response went into effect as of July 1, 2005 with an extension approved by the Contra Costa Board of Supervisors (BOS) to June 30, 2014. On March 11, 2013 the BOS extended the contract through December 31, 2015 in accordance with the County Local Ambulance Ordinance number 83-28 regulation adopted June 2, 1989. During this period a competitive RFP which included a new EMS system design was conducted with the approval of the EMSA. The new EMS system design went into effect January 1, 2016 and Ambulance Zone Summary of changes submitted to the EMSA.

AMBULANCE ZONE SUMMARY FORM: ERA III(2015)

<u>Local EMS Agency or County Name:</u> Contra Costa County
<u>Area or subarea (Zone) Name or Title:</u> ERA III
<u>Name of Current Provider(s):</u> Moraga-Orinda Fire Protection District
<u>Area or sub area (Zone) Geographic Description:</u> ERA-III includes the territory of the Moraga-Orinda Fire Protection District.
<u>Statement of Exclusivity, Exclusive or non-Exclusive (HS 1797.6):</u> Exclusive
<u>Type of Exclusivity, "Emergency Ambulance", "ALS", or "LALS" (HS 1797.85):</u> Emergency Ambulance –ALS, 9-1-1 Emergency Response
<u>Method to achieve Exclusivity, if applicable (HS 1797.224):</u> Grandfathered with exclusivity pursuant to H.S. 1797.224. Moraga Fire Protection District began providing paramedic ambulance service throughout the territory of its jurisdiction in June 1977 and has continued on an uninterrupted basis. In December 1997, the territory of the Moraga Fire Protection District was combined with the territory of the Orinda Fire Protection District and a new Moraga-Orinda Fire Protection District formed and the County exclusive operating area agreement update to reflect the expanded territory. EMSA approved this boundary adjustment on January 30, 2003.

AMBULANCE ZONE SUMMARY FORM: ERA IV(2015)

<u>Local EMS Agency or County Name:</u> Contra Costa County
<u>Area or subarea (Zone) Name or Title:</u> ERA IV
<u>Name of Current Provider(s):</u> San Ramon Valley Fire Protection District
<u>Area or sub area (Zone) Geographic Description:</u> ERA IV includes the territory of San Ramon Valley Fire Protection District.
<u>Statement of Exclusivity, Exclusive or non-Exclusive (HS 1797.6):</u> Exclusive.
<u>Type of Exclusivity, "Emergency Ambulance", "ALS", or "LALS" (HS 1797.85):</u> Emergency Ambulance –ALS, 9-1-1 Emergency Response
<u>Method to achieve Exclusivity, if applicable (HS 1797.224):</u> Periodic Request for proposal process. Request for proposal process held in 2008 resulted in a contract that expires October 21, 2018

AMBULANCE ZONE SUMMARY FORM: ERA V (2015)

Local EMS Agency or County Name:

Contra Costa County

Area or subarea (Zone) Name or Title:

ERA V

Name of Current Provider(s):

American Medical Response West

Area or sub area (Zone) Geographic Description:

ERA-V includes all of East County including the cities of Pittsburg, Bay Point, Antioch, Brentwood and unincorporated areas along the 9-1-1 boundary line separating East from Central County.

Statement of Exclusivity, Exclusive or non-Exclusive (HS 1797.6):

Exclusive.

Type of Exclusivity, "Emergency Ambulance", "ALS", or "LALS" (HS 1797.85):

Emergency Ambulance, ALS, 9-1-1 Emergency Response

Method to achieve Exclusivity, if applicable (HS 1797.224):

Competitively-determined. Periodic Request for Proposal and review process held approximately every 10 years. EMS Authority approved an RFP August 10, 2004. An exclusive 9-1-1 contract with American Medical Response went into effect as of July 1, 2005 with an extension approved by the Contra Costa Board of Supervisors (BOS) to June 30, 2014. On March 11, 2013 the BOS extended the contract through December 31, 2015 in accordance with the County Local Ambulance Ordinance number 83-28 regulation adopted June 2, 1989. During this period a competitive RFP which included a new EMS system design was conducted with the approval of the EMSA. The new EMS system design went into effect January 1, 2016 and Ambulance Zone Summary of changes submitted to the EMSA.