

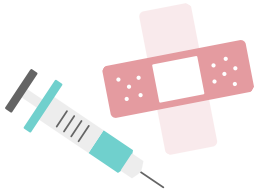
Careers At-A-Glance

Professions within Contra Costa Health Services

There are more health careers than just becoming a doctor or a nurse; In addition to those, there are also other important roles you can take on to improve health and safety in your community!

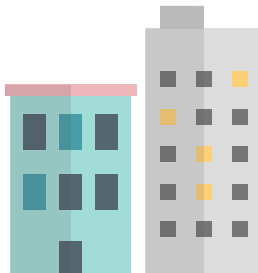
For more information on the careers listed plus other opportunities, check out:

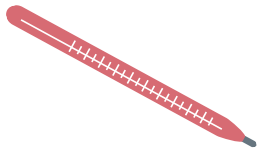
<https://cchealth.org/jobs/>



Position	HS Diploma/GED	Associate's Degree	Bachelor's Degree	Years of Experience	Master's Degree	Doctorate Degree	CCHS Training	Salary (Annually)	What they do
Disease Intervention Technician				1/2				\$54,648.60 - \$66,425.76	Helps detect and manage diseases in the community
Community Support Worker								\$36,450.72 - \$44,306.04	Provides support in mental health to the community individually and in groups
Vector Control								\$40,324.32 - \$49,014.36	Handles organisms that may cause disease
Housing Specialist				1				\$55,247.16 - \$67,153.20	Works to support affordable housing and/or redevelopment projects
Lab Technician								\$42,707.76 - \$51,911.52	Assists in sample collection and processing at the clinical laboratory
Community Health Worker				1/2				\$38,605.20 - \$42,562.20	Works to plan and conduct public health programs that affect the community
Hazardous Materials Technician				1				\$59,469.96 - \$65,565.59	Helps handle and dispose hazardous materials
Pharmacy Technician								\$52,794.48 - \$64,172.04	Helps receive, store and distribute pharmacy materials, supplies and equipment
Medical Assistant				1/2				\$45,008.88 - \$54,708.48	Assists with medical care through simple medical tasks
Imaging Technician								\$71,538.84 - \$86,955.96	Performs diagnostic imaging procedures, such as X-ray, MRI scans and CT scans

= level of schooling needed for position





Position	HS Diploma/GED	Associate's Degree	Bachelor's Degree	Years of Experience	Master's Degree	Doctorate Degree	CCHS Training	Salary (Annually)	What they do
Respiratory Therapist								\$71,326.68 - \$86,698.08	Provides medical care to those affected by lung disease
Nutritionist				1				\$63,148.20 - \$76,757.04	Provides nutrition services and education to the public
Social Worker				2				\$65,567.52 - \$79,697.64	Helps individuals and families access resources to improve their lives
Emergency Planning Coordinator				1				\$67,747.32 - \$82,347.24	Assists community in disaster planning and response
Hazardous Materials Specialist				1				\$74,901.36 - \$91,043.04	Monitors and inspects hazardous materials and emergency situations
Pollution Prevention Specialist				1				\$71,256.12 - \$86,612.28	Prevents pollution through educational programs and policy
Microbiologist								\$69,376.44 - \$80,311.92	Performs tests on samples to prevent harmful spread of illness and disease
Director of Safety and Performance Improvement				5				\$148,767.97 - \$180,828.36	Directs efforts to provide safer clinical care for patients
Psychologist				2				\$68,563.56 - \$96,878.64	Helps people adopt healthy coping skills, attitudes, and behaviors
Medical Social Worker								\$61,480.56 - \$74,730.00	Provides counseling and social services to help patients follow care plans
Occupational Therapist								\$78,594.72 - \$95,532.36	Works with people needing to develop or restore daily living skills
Pharmacist								\$132,980.52 - \$153,941.52	Dispenses and advises on prescriptions and medicines

= level of schooling needed for position

