



**FEDERAL & STATE HOMELESS
FUNDING DOLLARS ANALYSIS**

CCICH Advisory Board

April 8, 2014

FUNDING SOURCES

HUD:
Affordable
Housing

HOME

HOPWA

HUD:
Community
Development

CDBG

NSP

HUD:
Homeless
Assistance

CoC

ESG

VA

SSVF

HUD-
VASH

State of CA

ESG

TOTAL FUNDING IN 2012/2013

Funding Source	Award Amount
CoC Program	\$9,142,997
CDBG	\$5,094,380
ESG	\$201,300
HOME	\$2,198,262
HOPWA	\$500,000
State ESG	\$302,523
VA: SSVF	\$2,431,179
Total	\$19,870,641

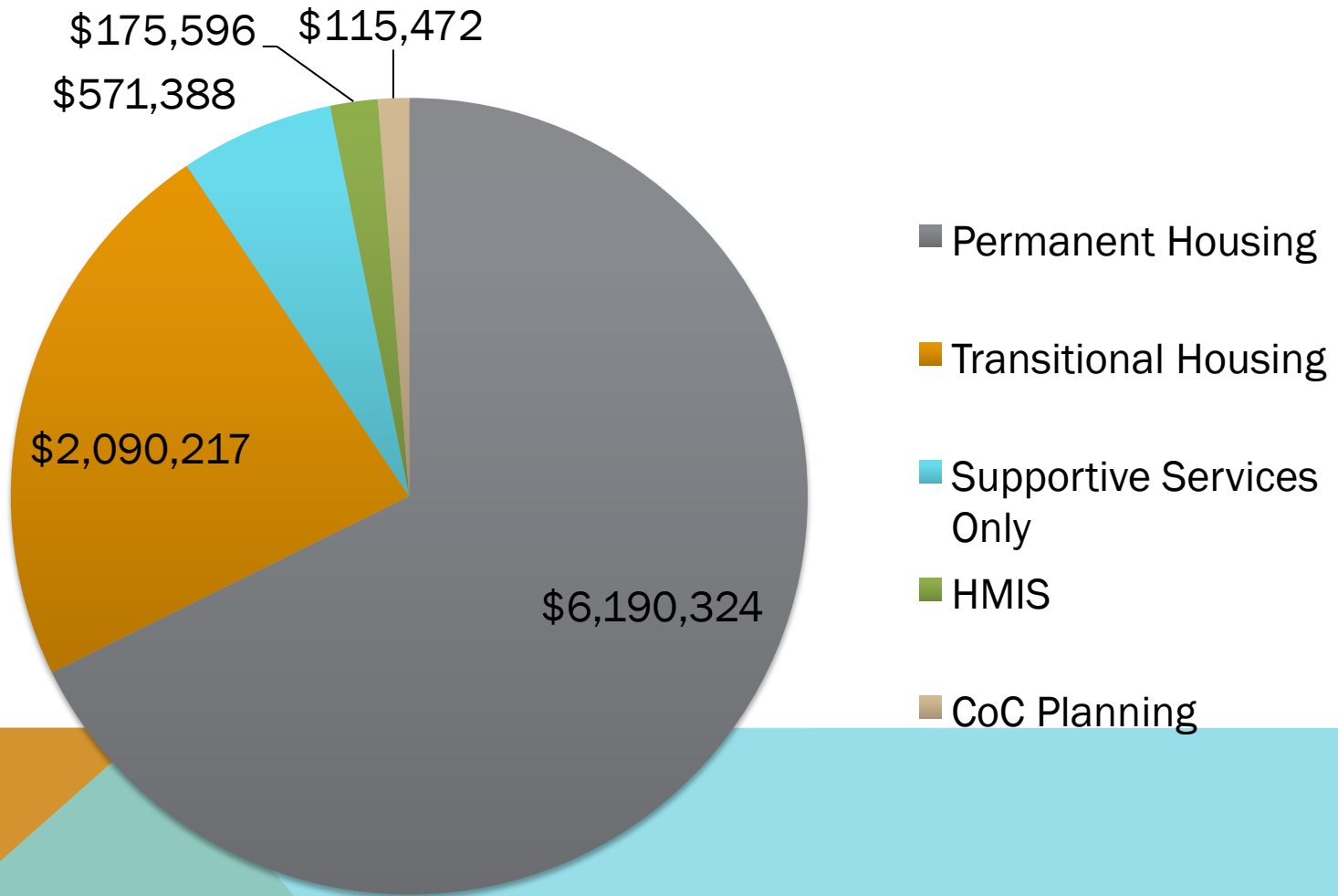


CONTRA COSTA COUNTY FEDERAL HUD FUNDS

Funding Source	2012/2013	2013/2014 (projected)
CoC Program	\$9,142,997	\$10,362,517
CDBG	\$2,912,880	\$2,759,312
ESG	\$201,300	\$256,559
HOME	\$1,797,138	\$1,681,500
HOPWA	\$500,000	\$500,000
Total	\$14,554,315	\$15,559,888

2012/2013 Source: <https://www.onecpd.info/grantees/>
2013/2014 Source: http://www.ccreach.org/ccp_publications/index.cfm

2012 COC PROGRAM AWARDS BY COMPONENT



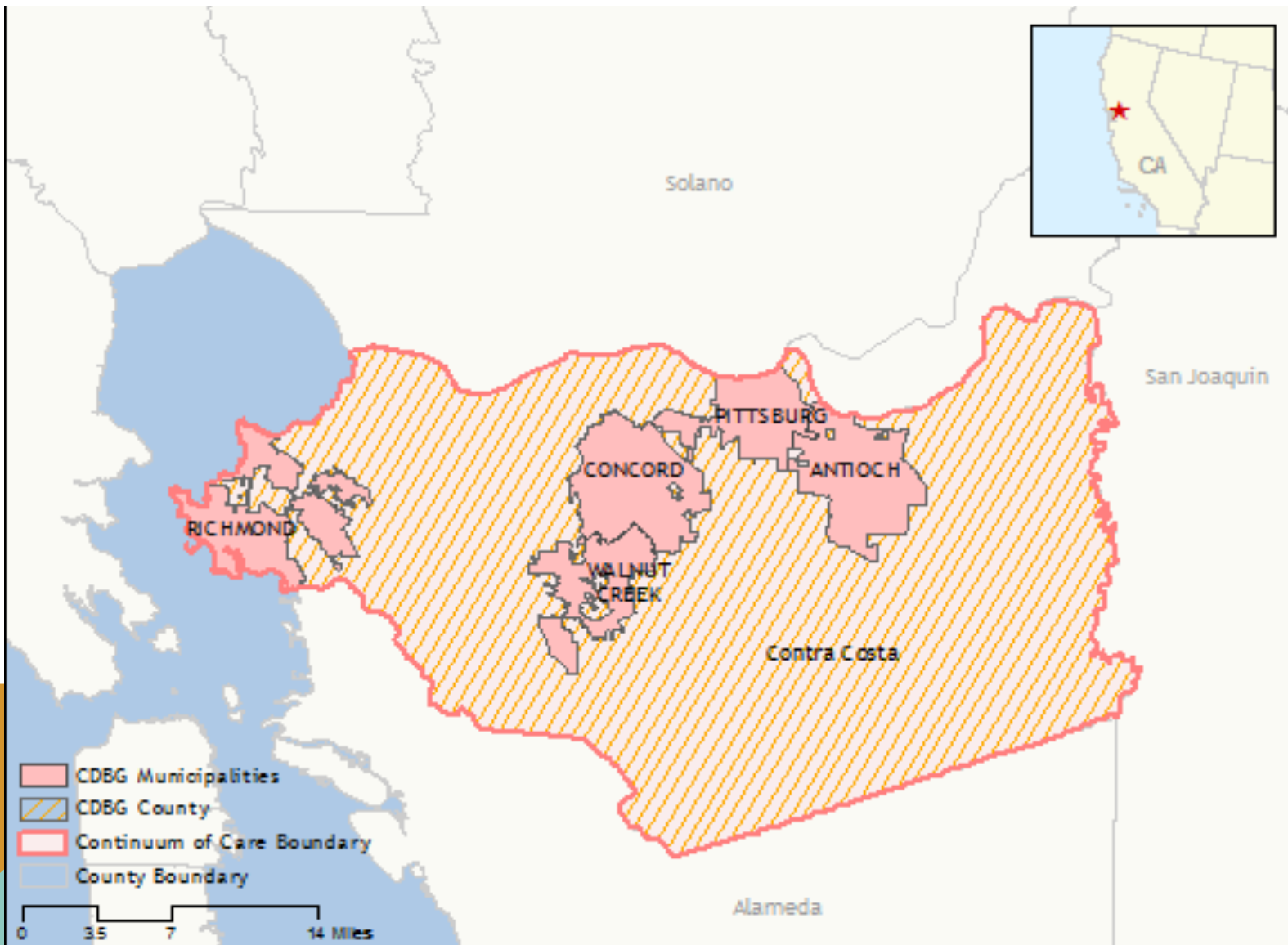
Source: <https://www.onecpd.info/grantees/ca-505/>

2013 COC PROGRAM TIER 1 RENEWALS

Project	Request	Award	Difference
ACCESS	\$455,894.00	\$505,876.00	\$49,982.00
ACCESS Plus	\$103,990.00	\$114,494.00	\$10,504.00
Contra Costa County TH Program	\$401,204.00	\$401,204.00	\$0.00
Contra Costa HMIS	\$175,596.00	\$175,596.00	\$0.00
Contra Costa RRH	\$173,567.00	\$173,567.00	\$0.00
Garden Park Apartments	\$223,799.00	\$254,764.00	\$30,965.00
Giant Road Apartments	\$96,300.00	\$96,300.00	\$0.00
GRIP PSH	\$97,188.00	\$108,251.00	\$11,063.00
Idaho Apartments	\$194,836.00	\$194,836.00	\$0.00
Lakeside Apts	\$141,155.00	\$141,155.00	\$0.00
MOVE	\$77,010.00	\$77,010.00	\$0.00
Permanent Connections	\$176,681.00	\$200,100.00	\$23,419.00
Permanent Step Project	\$129,632.00	\$145,348.00	\$15,716.00
Pittsburg Family Center	\$82,336.00	\$82,336.00	\$0.00
Project CHOICE	\$119,309.00	\$134,223.00	\$14,914.00
PCH-AAA	\$511,063.00	\$581,873.00	\$70,810.00
Project Independence	\$666,691.00	\$666,691.00	\$0.00
REACH Plus	\$355,838.00	\$355,838.00	\$0.00
S+C Consolidated	\$3,013,779.00	\$3,463,347.00	\$449,568.00
S+C Lakeside	\$55,572.00	\$63,876.00	\$8,304.00
S+C PCH	\$420,369.00	\$483,177.00	\$62,808.00
Transitional Housing Partnership	\$277,699.00	\$313,239.00	\$35,540.00
Villa Vasconcellos	\$69,351.00	\$79,731.00	\$10,380.00
West Richmond	\$44,851.00	\$47,208.00	\$2,357.00
Total	\$8,063,710.00	\$8,860,040.00	\$796,330.00

Source: <https://www.onecpd.info/onecpd/assets/File/2013-all-coc-grants.pdf>

CDBG JURISDICTION MAP



2013 CDBG & HOME BY JURISDICTION

Jurisdiction	CDBG Funds	HOME Funds
Antioch	\$737,881	
Concord	\$871,573	
Pittsburg	\$539,436	
Richmond	\$1,077,675	\$401,124
Walnut Creek	\$246,968	
Total	\$3,473,533	\$401,124

Source: <https://www.onecpd.info/grantees/>

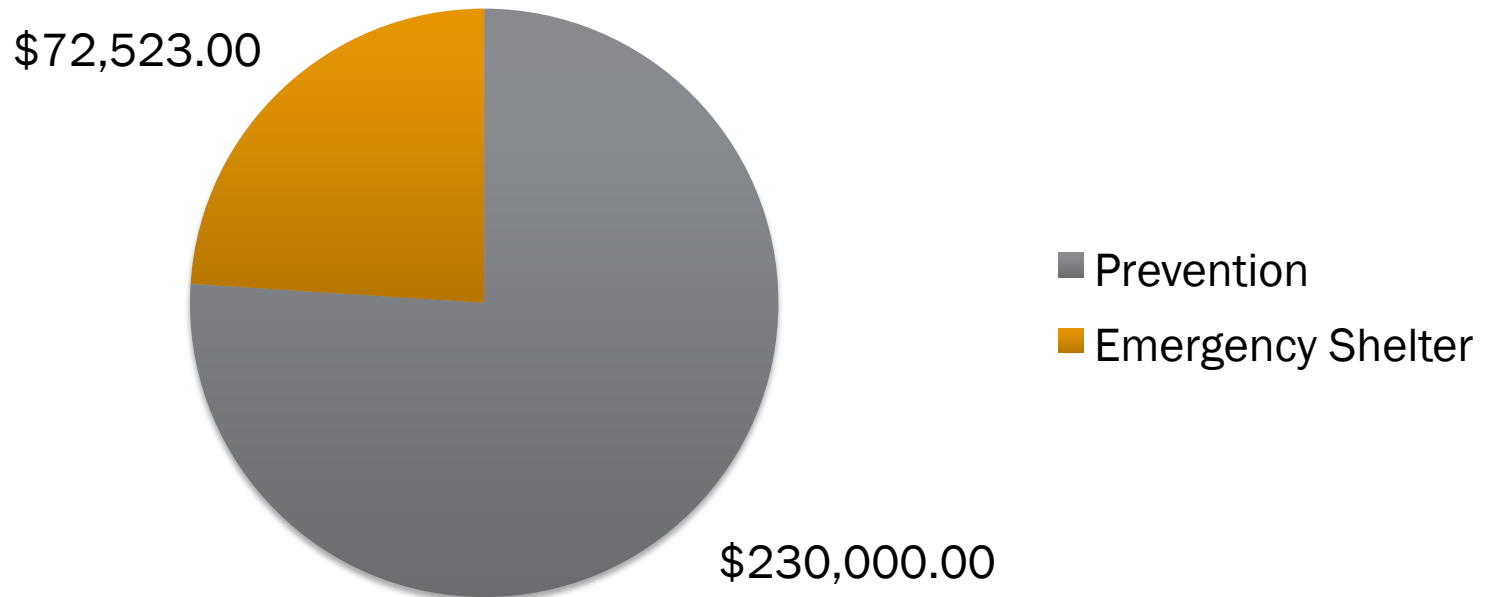
VA: SSVF 2013

Program	SSVF Funds
East Bay Community Recovery Project*	\$1,032,000
SHELTER, Inc.	\$861,532
Swords to Plowshares*	\$537,647
Total	\$2,431,179

*Note: Funds include allocation for both Oakland/Alameda County and Richmond/Contra Costa County.

Source: http://www.va.gov/homeless/docs/ssvf/2013_ssvf_awards_final_71113.pdf

2012 STATE ESG AWARDS



Source: http://www.hcd.ca.gov/fa/esg/2012_ESG_Award_List.pdf

2013 STATE ESG: AMOUNTS APPLIED FOR (AWARDS NOT YET ANNOUNCED)

