



Countywide Emergency Department 9-1-1 Ambulance Patient Transfer of Care Report Monthly Performance: April 2017

**Prepared by:
Contra Costa Emergency
Medical Services**

Visit us at www.cccems.org

4/30/2017



9-1-1 Patient Transfer of Care Time

March 1 - 31, 2017

Hospital Patient Transfer of Care Time from Arrival to Hospital to Documented Transfer of Care	Average Patient Transfer of Care Time (Min)	Total Number of Transports	90th Percentile (Min) Transfer of Patient Care Time Exceeds this Time in 10% of Cases
Alta Bates	0:22:30	246	0:36:11
CCRMC	0:16:15	474	0:29:36
CCRMC - PES	0:19:32	684	0:35:07
Childrens Oakland	0:13:10	26	0:20:24
John Muir Concord	0:10:22	930	0:18:08
John Muir Walnut Creek	0:10:48	889	0:20:00
Kaiser Antioch	0:15:47	585	0:27:56
Kaiser Richmond	0:15:48	834	0:27:11
Kaiser Vallejo	0:13:48	118	0:22:11
Kaiser Walnut Creek	0:16:06	661	0:29:03
Other	0:19:24	202	0:34:54
Sutter Delta	0:18:26	820	0:35:26

AMR MEDS (ePCR) Data

Based on all Contra Costa transports where Time Care Transferred was entered (County-wide AMR Transports).

Transfer of Patient Care Times under 0:01:00 and over 3:00:00 removed from data.

All Beh/Psych Transports to CCRMC assumed to be PES

All Other Primary Impressions Transported to CCRMC assumed to be ER

Doctors Medical Center closed its ER to 9-1-1 Ambulance Traffic on 8/7/2014 at 07:00:00 AM>

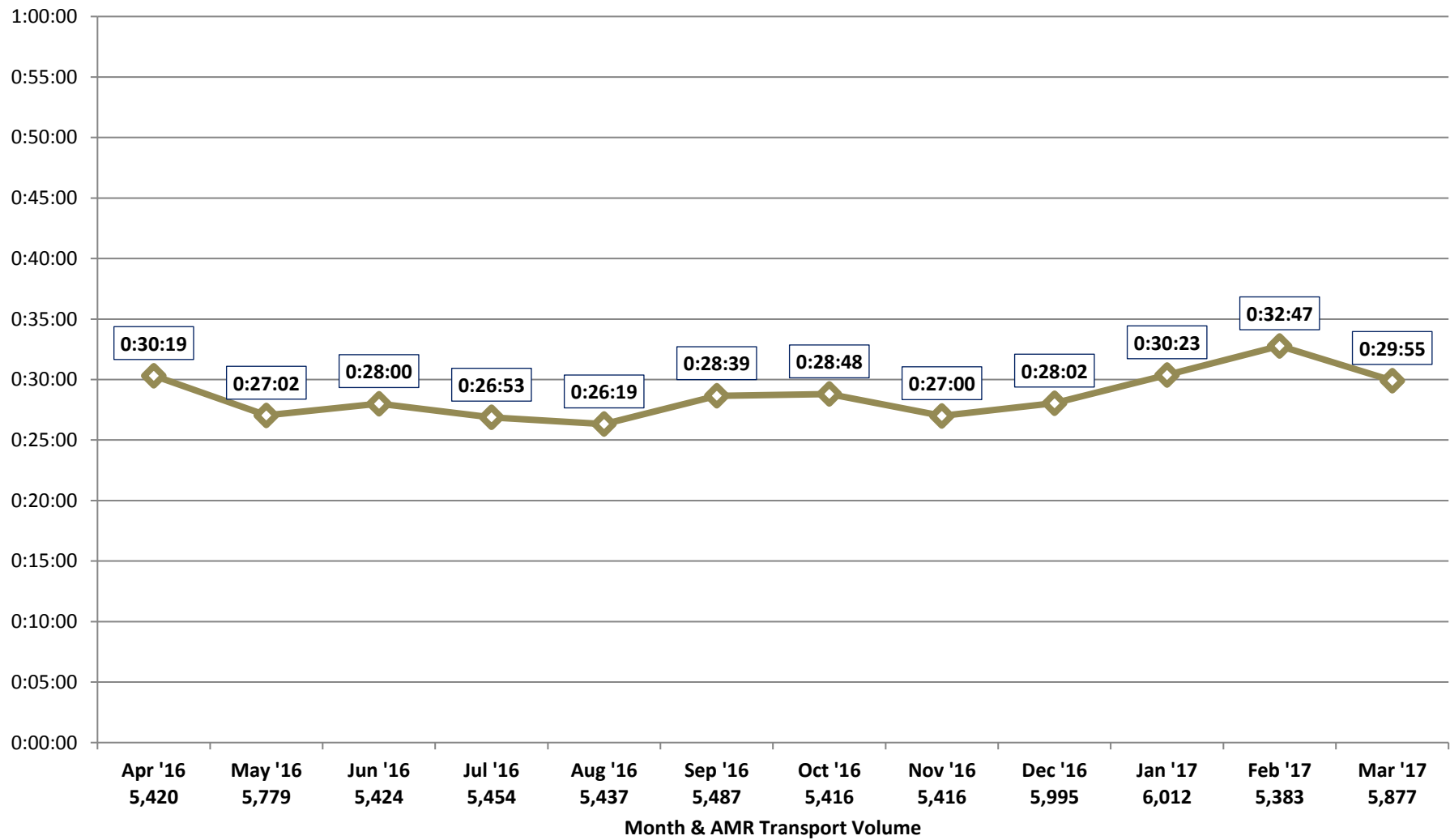


Patient Transfer of Care Times by Facility 90th PERCENTILE OF ALL FACILITIES

April 2016 - March 2017

67,100 Transports (5,592 per Month)

Source: AMR MEDS (ePCR Database)



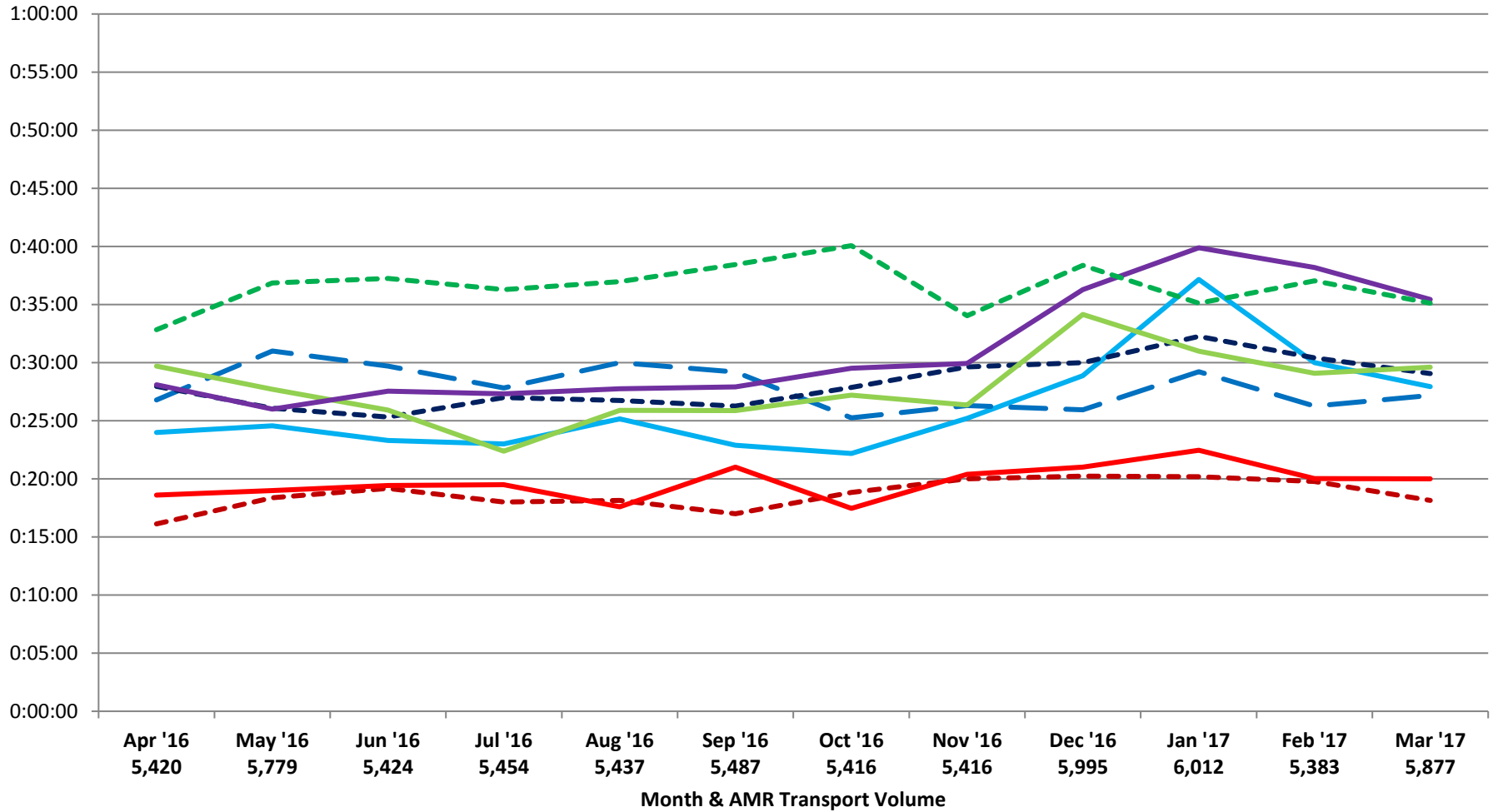


Patient Transfer of Care Times by Facility (90th Percentile)

April 2016 - March 2017

Source: AMR MEDS (ePCR Database)

- - - John Muir - Concord
- John Muir - Walnut Creek
- Kaiser Hospital - Antioch
- Kaiser Hospital - Richmond
- - - Kaiser Hospital - Walnut Creek
- Contra Costa Regional Medical Center
- Sutter Delta Medical Center
- - - PES - Contra Costa Regional Medical Center





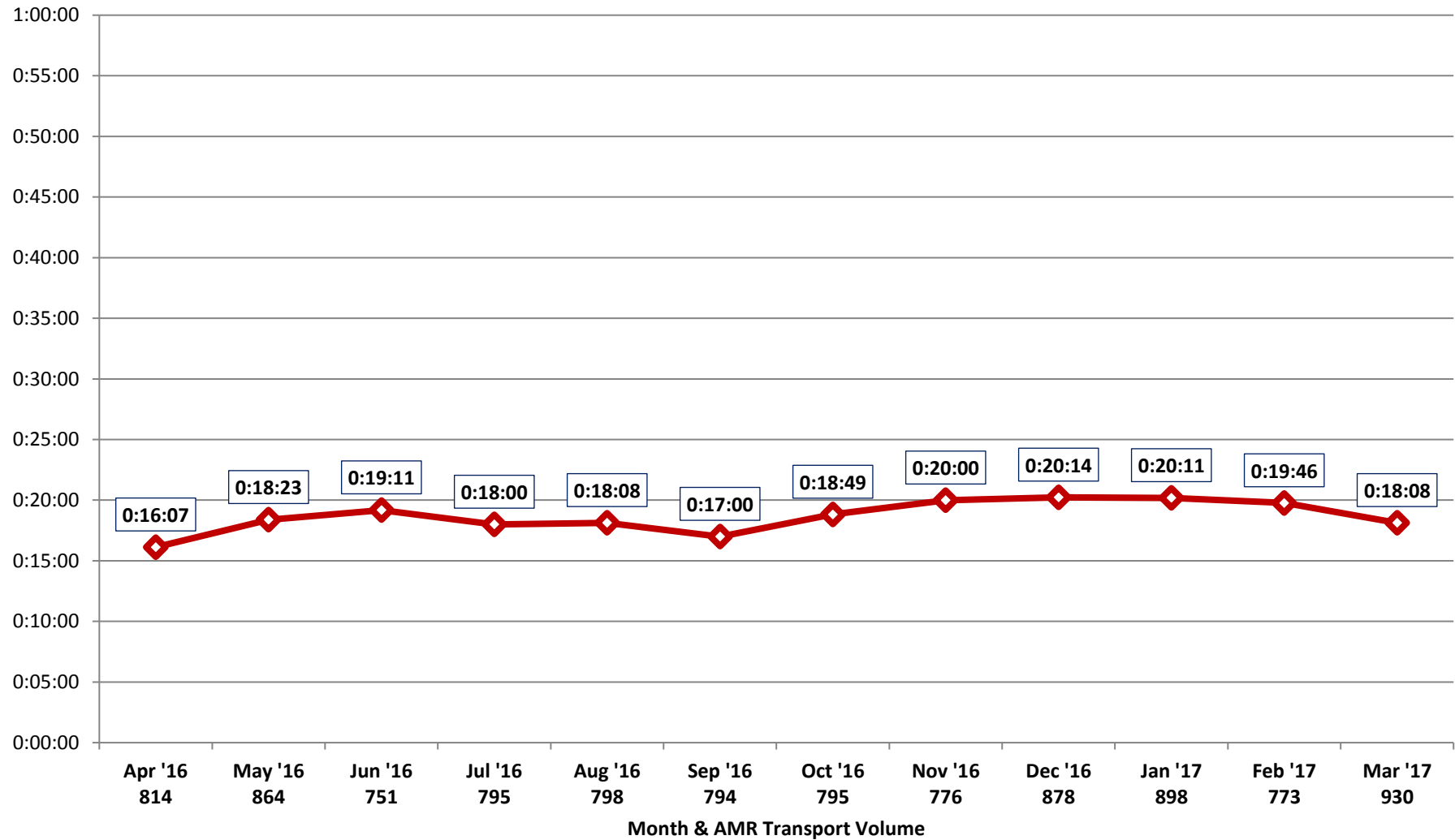
Patient Transfer of Care Times by Facility (90th Percentile)

John Muir - Concord

April 2016 - March 2017

9,866 Total Transports (822 per Month)

Source: AMR MEDS (ePCR Database)





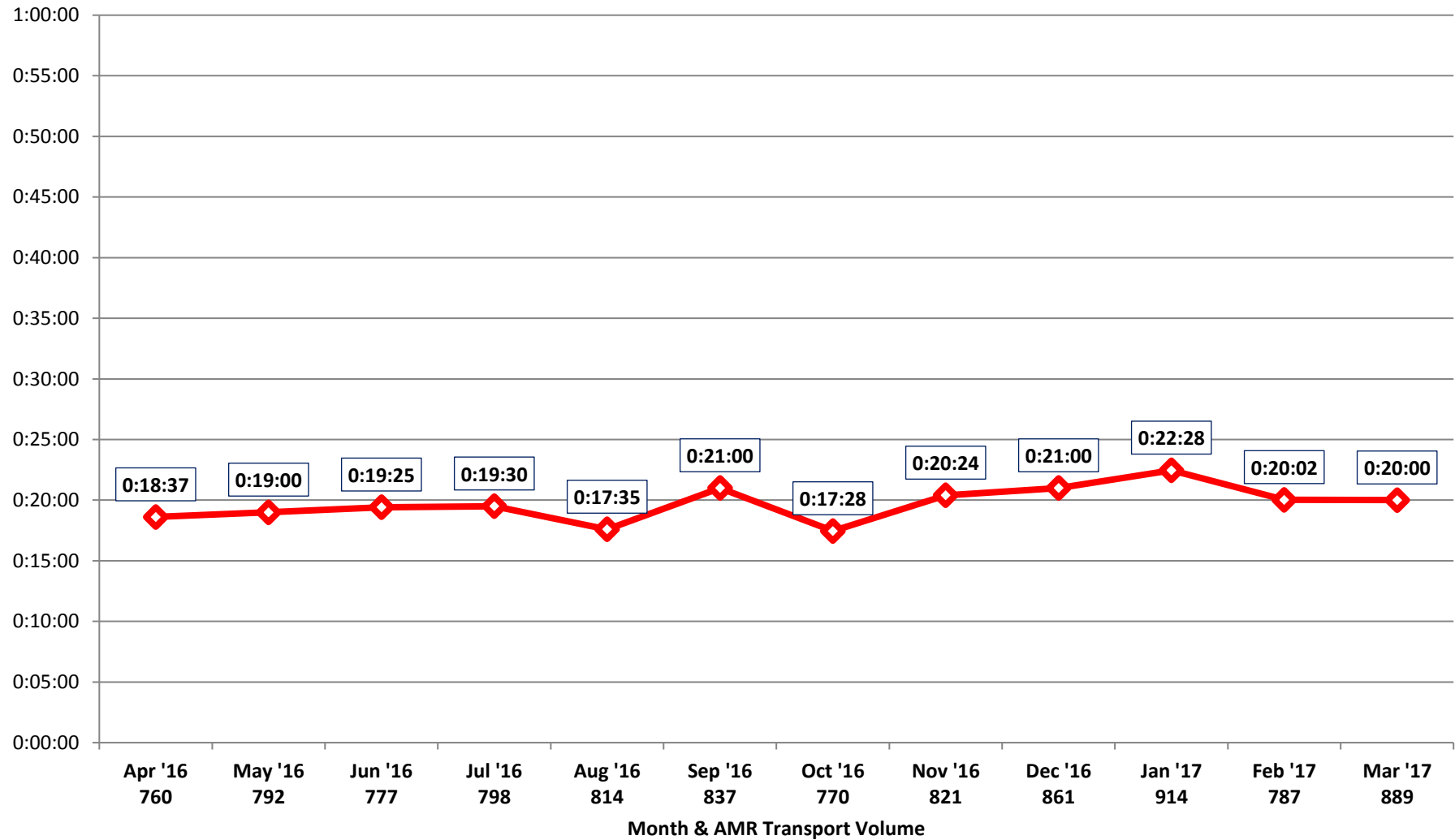
Patient Transfer of Care Times by Facility (90th Percentile)

John Muir - Walnut Creek

April 2016 - March 2017

9,820 Total Transports (818 per Month)

Source: AMR MEDS (ePCR Database)





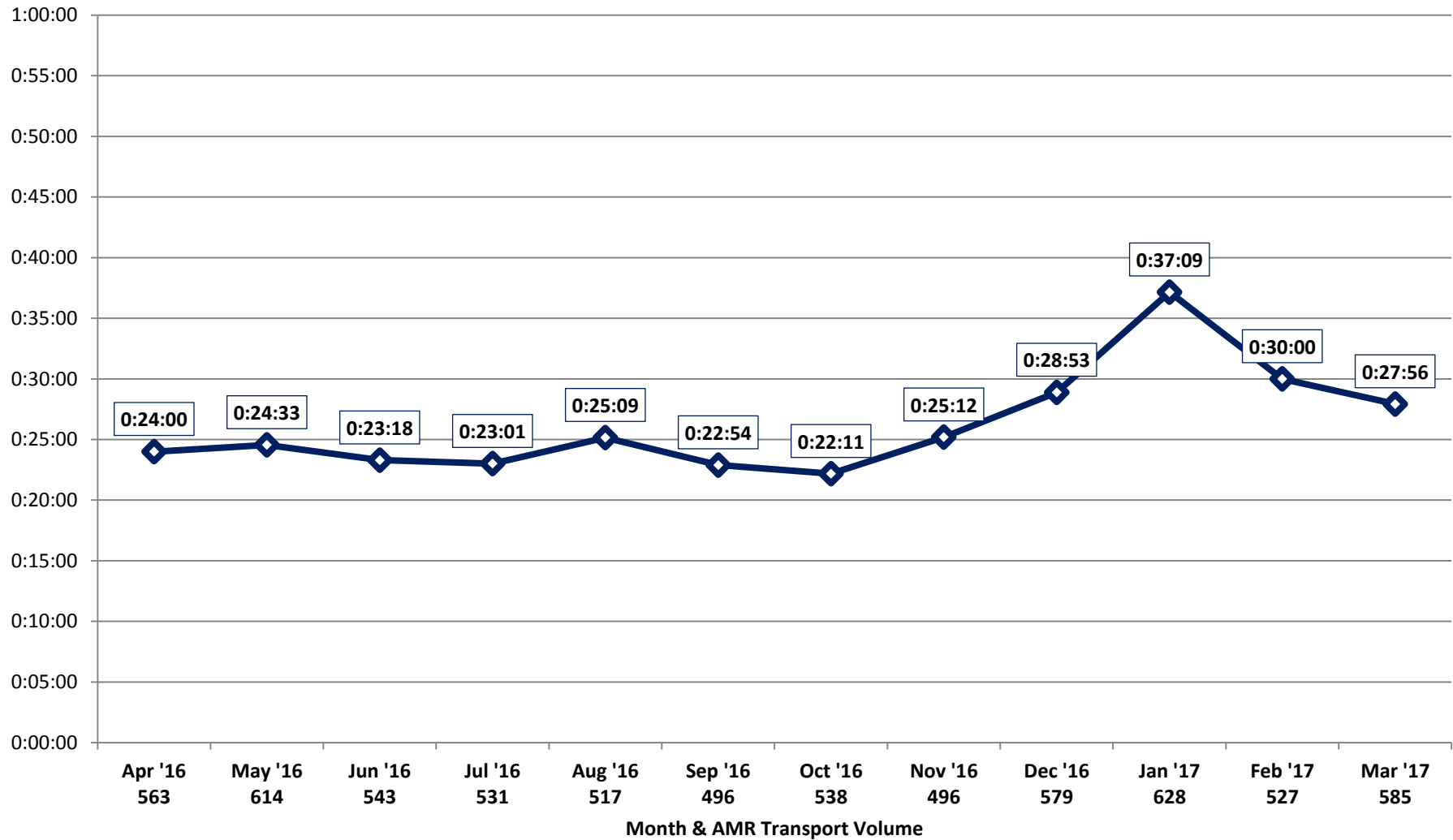
Patient Transfer of Care Times by Facility (90th Percentile)

Kaiser - Antioch

April 2016 - March 2017

6,617 Total Transports (551 per Month)

Source: AMR MEDS (ePCR Database)





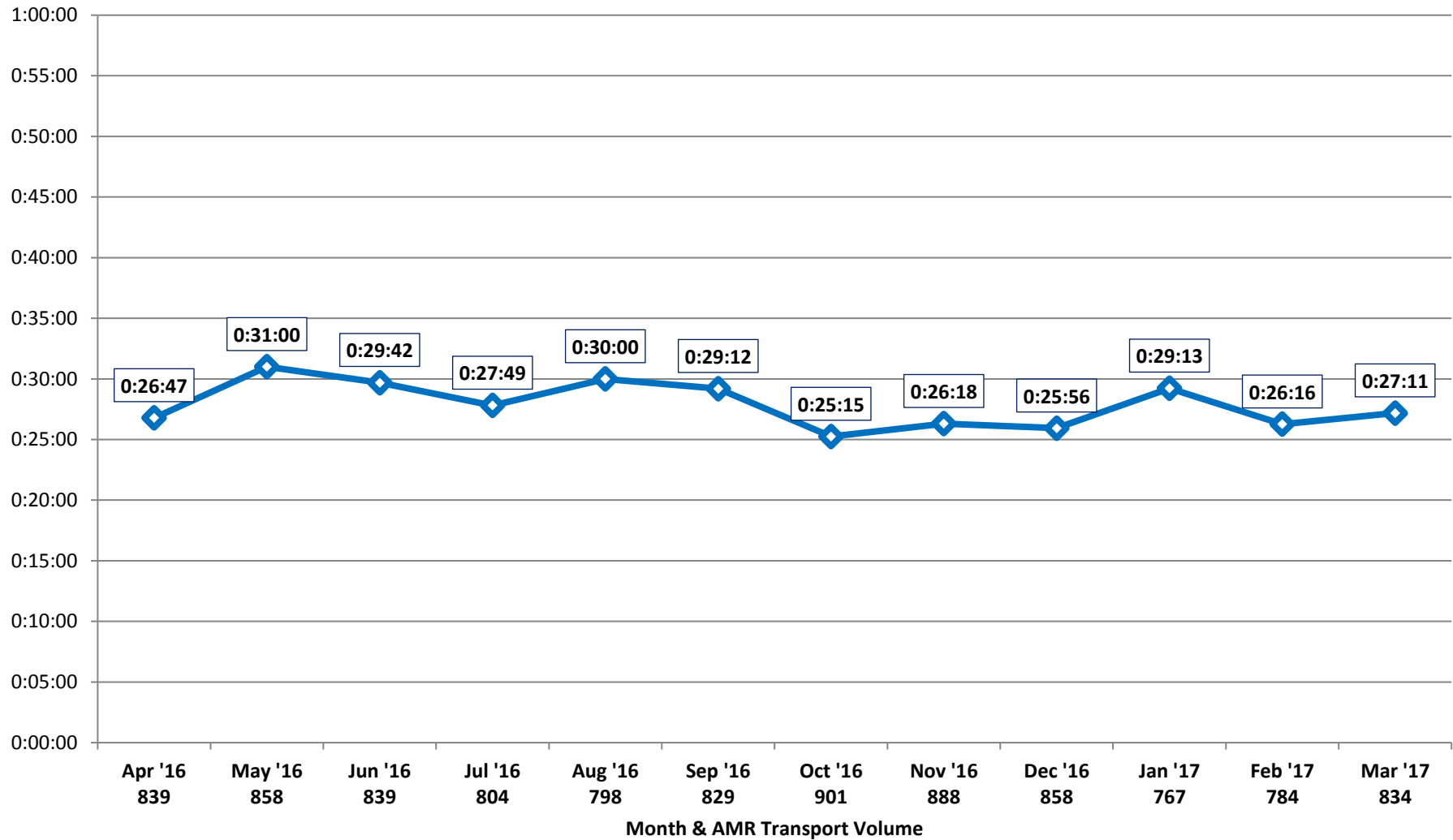
Patient Transfer of Care Times by Facility (90th Percentile)

Kaiser - Richmond

April 2016 - March 2017

9,999 Total Transports (833 per Month)

Source: AMR MEDS (ePCR Database)





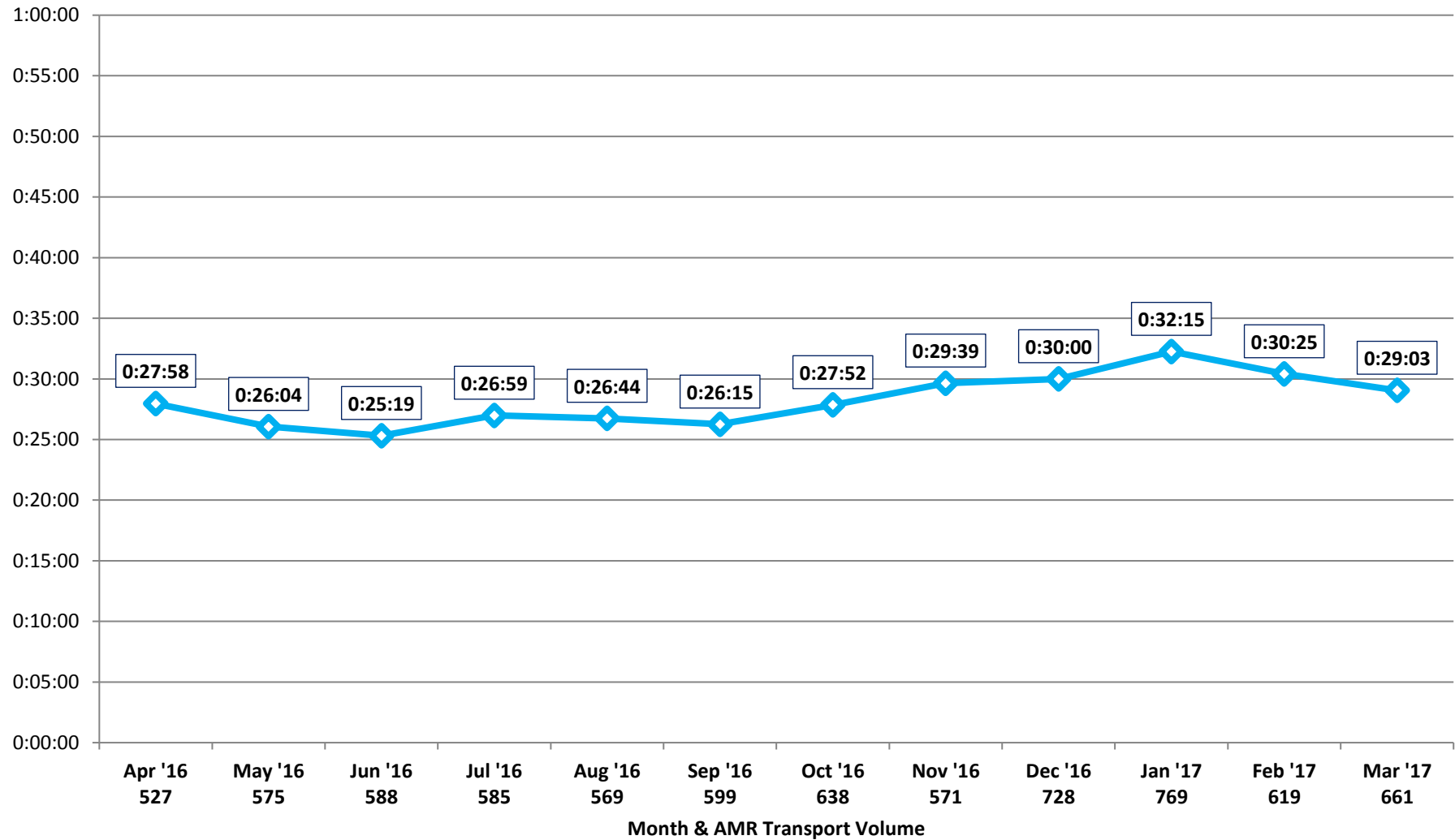
Patient Transfer of Care Times by Facility (90th Percentile)

Kaiser - Walnut Creek

April 2016 - March 2017

7,429 Total Transports (619 per Month)

Source: AMR MEDS (ePCR Database)





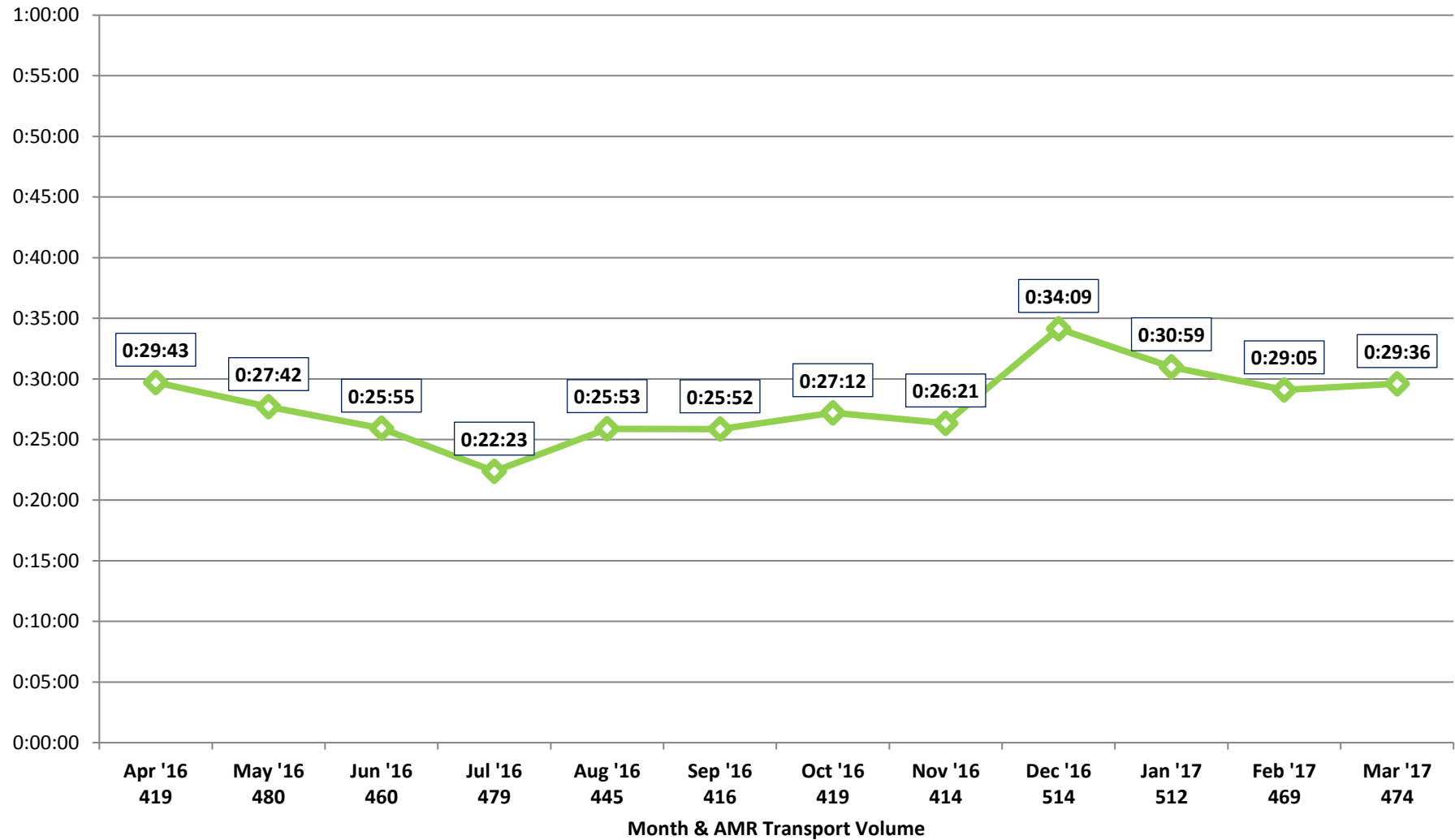
Patient Transfer of Care Times by Facility (90th Percentile)

Contra Costa Regional Medical Center

April 2016 - March 2017

5,501 Total Transports (458 per Month)

Source: AMR MEDS (ePCR Database)





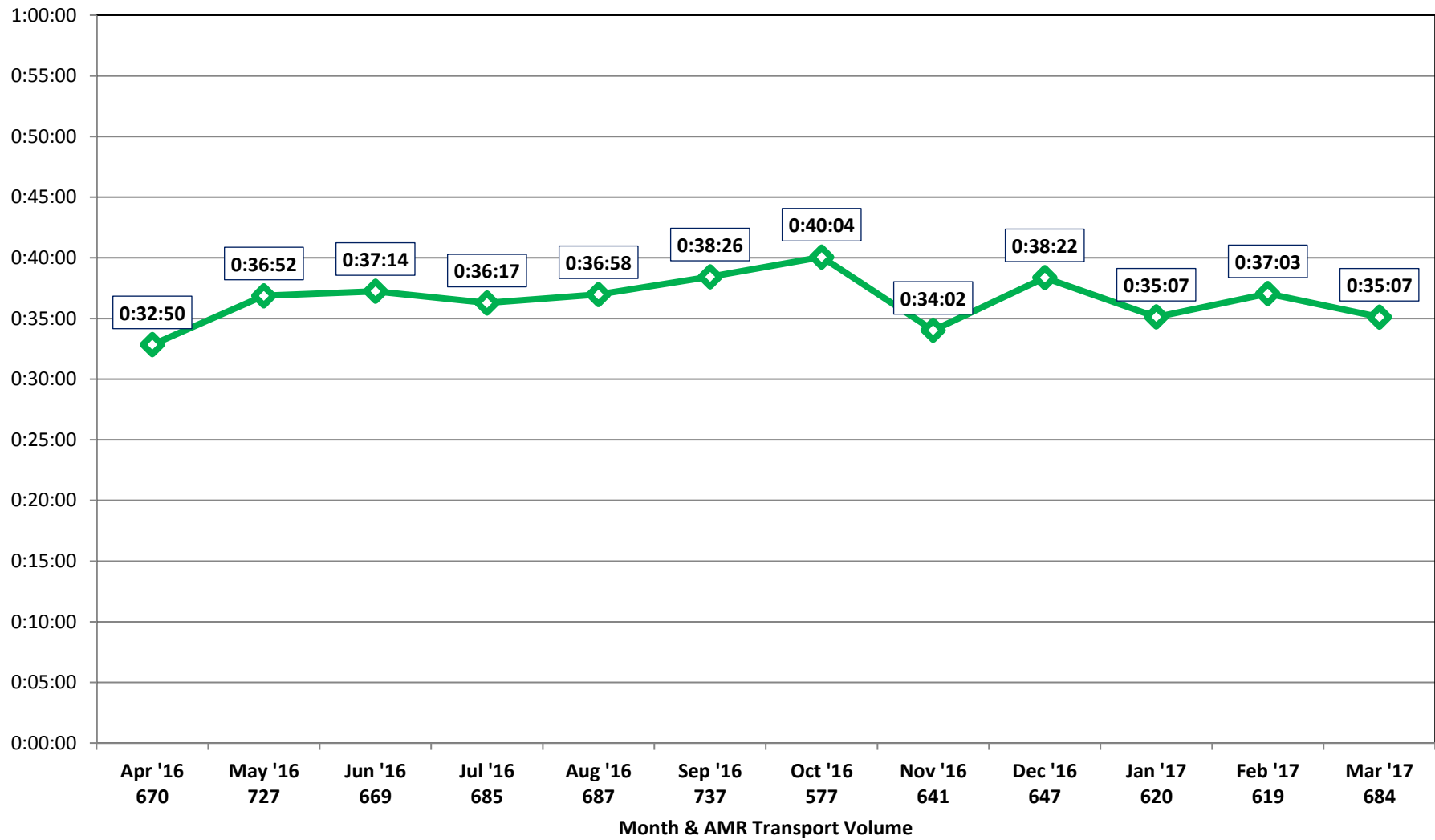
Patient Transfer of Care Times by Facility (90th Percentile)

CCRMC - PES

April 2016 - March 2017

7,963 Total Transports (664 per Month)

Source: AMR MEDS (ePCR Database)





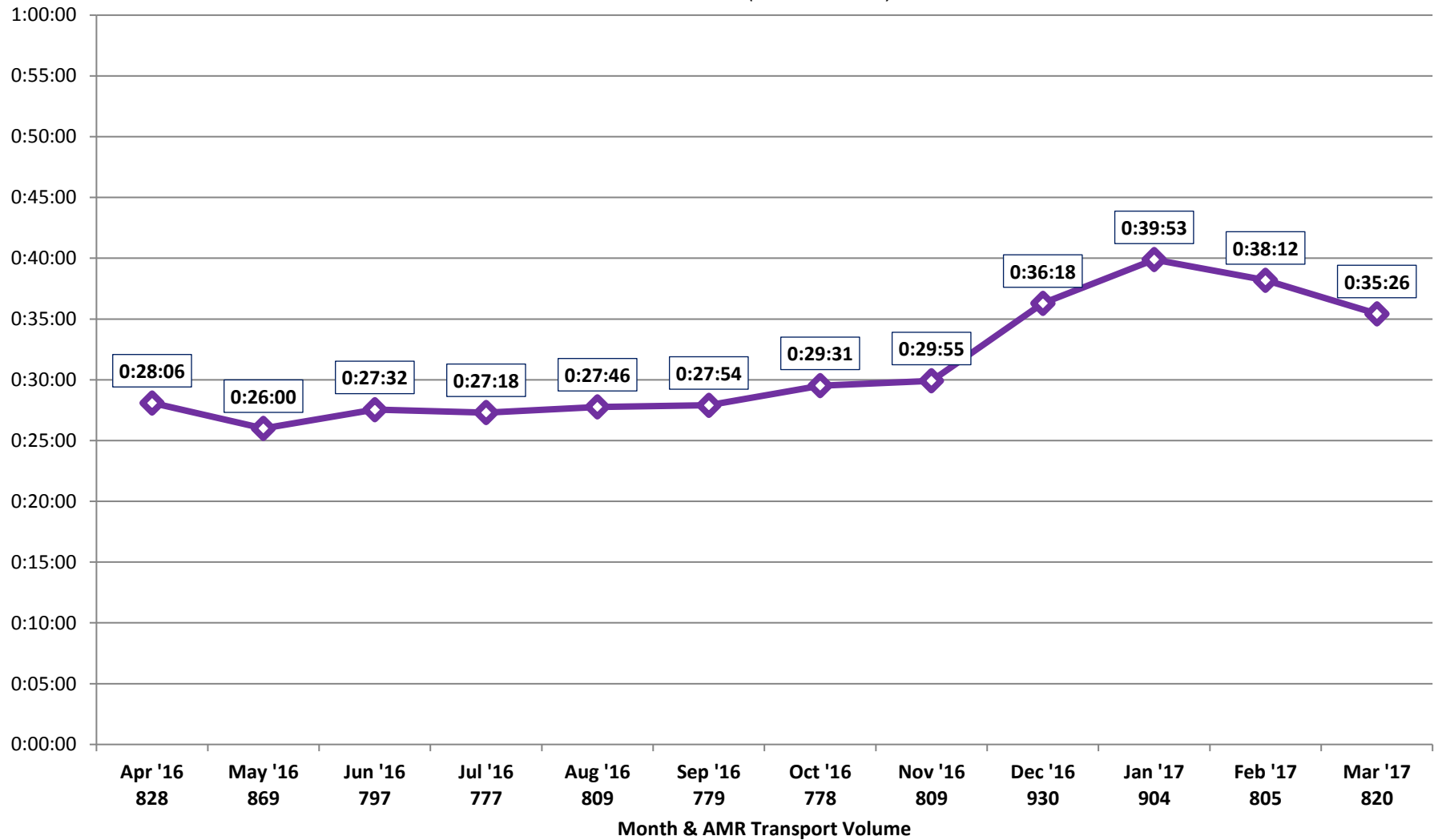
Patient Transfer of Care Times by Facility (90th Percentile)

Sutter Delta Medical Center

April 2016 - March 2017

9,905 Total Transports (825 per Month)

Source: AMR MEDS (ePCR Database)





**AMR Transports in Contra Costa County
Resulting in Never Events
(≥1 Hour Patient Transfer of Care Time)
1/1/2015 - 2/28/2017**

Never Events by Facility (>1 Hour Drop Time)	2015	2016	2017
CCRMC	35	74	24
CCRMC PES	42	79	8
John Muir Concord	7	15	2
John Muir Walnut Creek	13	23	3
Kaiser Antioch	12	38	11
Kaiser Richmond	45	121	12
Kaiser Walnut Creek	11	24	2
Sutter Delta	318	187	59

Paramedic Primary Impressions Never Events (>1 Hour Drop Time)	2015	2016	2017
Pain	101	87	31
Behavioral / Psychiatric	63	109	29
Trauma	69	81	19
Other - Sick/Dizzy/Weakness	56	63	31
Neurological	42	46	31
Toxicological	41	43	12
Respiratory	30	38	18
Vascular	24	37	19
Gastrointestinal	33	27	15
Cardiac	17	15	9
Diabetes	2	10	1
OB/GYN	2	0	0
Allergic Reaction	2	2	0
Environmental	1	3	0

Never Events (>1 Hour Drop Time) By Patient Gender	2015	2016	2017
Female	265	280	87
Male	218	281	109

Never Events (>1 Hour Drop Time) By Patient Age	2015	2016	2017
0-9	5	7	2
10-19	22	27	9
20-29	57	57	17
30-39	58	74	21
40-49	60	68	20
50-59	91	77	37
60-69	74	82	33
70-79	51	63	25
80-89	43	69	24
90-99	22	35	8
100-109	0	2	0

Never Events (>1 Hour Drop Time) By Patient Ethnicity	2015	2016	2017
Asian	7	10	4
Black/African American	131	120	50
Caucasian	228	291	99
Hispanic or Latino	85	91	22
Other Race	32	49	21

Source: AMR MEDS (ePCR Database)



Paramedic Primary Impressions Never Events (≥1 Hour Patient Transfer of Care Time)

1/1/2015 - 3/31/2017

Source: AMR MEDS (ePCR Database)

