

# Pediatric Overdose/Toxic Ingestion

### History

- Ingestion or suspected ingestion of a potentially toxic substance
- Substance ingested, route and quantity
- Time of ingestion
- Reason (suicidal, accidental or criminal)
- Available medications in home
- Past medical history and medications

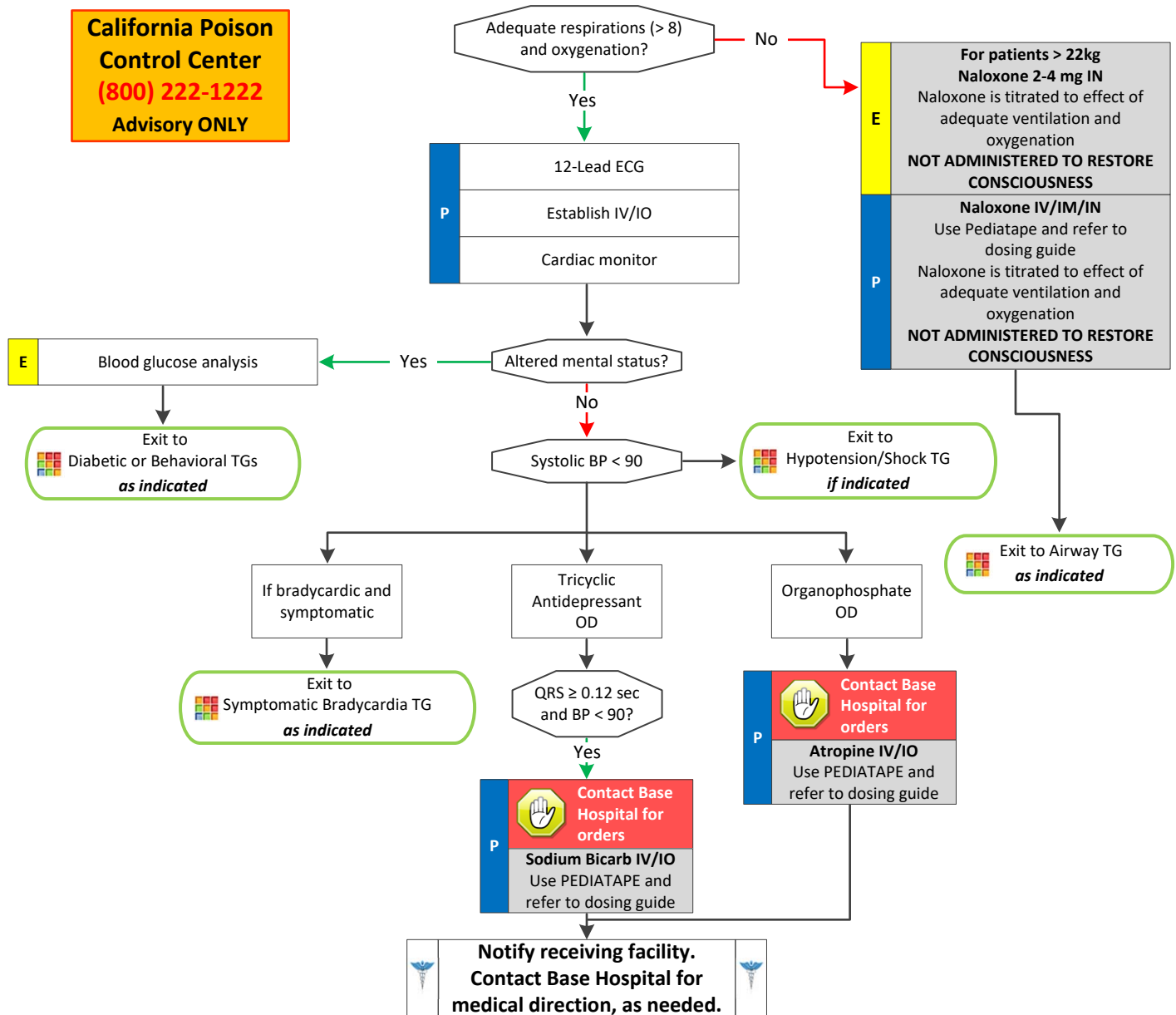
### Signs and Symptoms

- Mental status changes
- Hypo or hypertension
- Decreased respiratory rate
- Tachycardia or dysrhythmias
- Seizures
- S.L.U.D.G.E.

### Differential

- Tricyclic antidepressants (TCAs)
- Acetaminophen (Tylenol)
- Aspirin
- Depressants
- Stimulants
- Anticholinergics
- Cardiac medications
- Solvents, alcohols or cleaning agents
- Insecticides (organophosphates)

**California Poison Control Center**  
**(800) 222-1222**  
**Advisory ONLY**



Pediatric Treatment Guidelines

### Pearl

- Do not rely on patient history of ingestion, especially in suicide attempts. Make sure the patient is still not carrying other medications or weapons. Bring bottles, contents, and emesis to ED.

