

Pediatric Diabetic

History

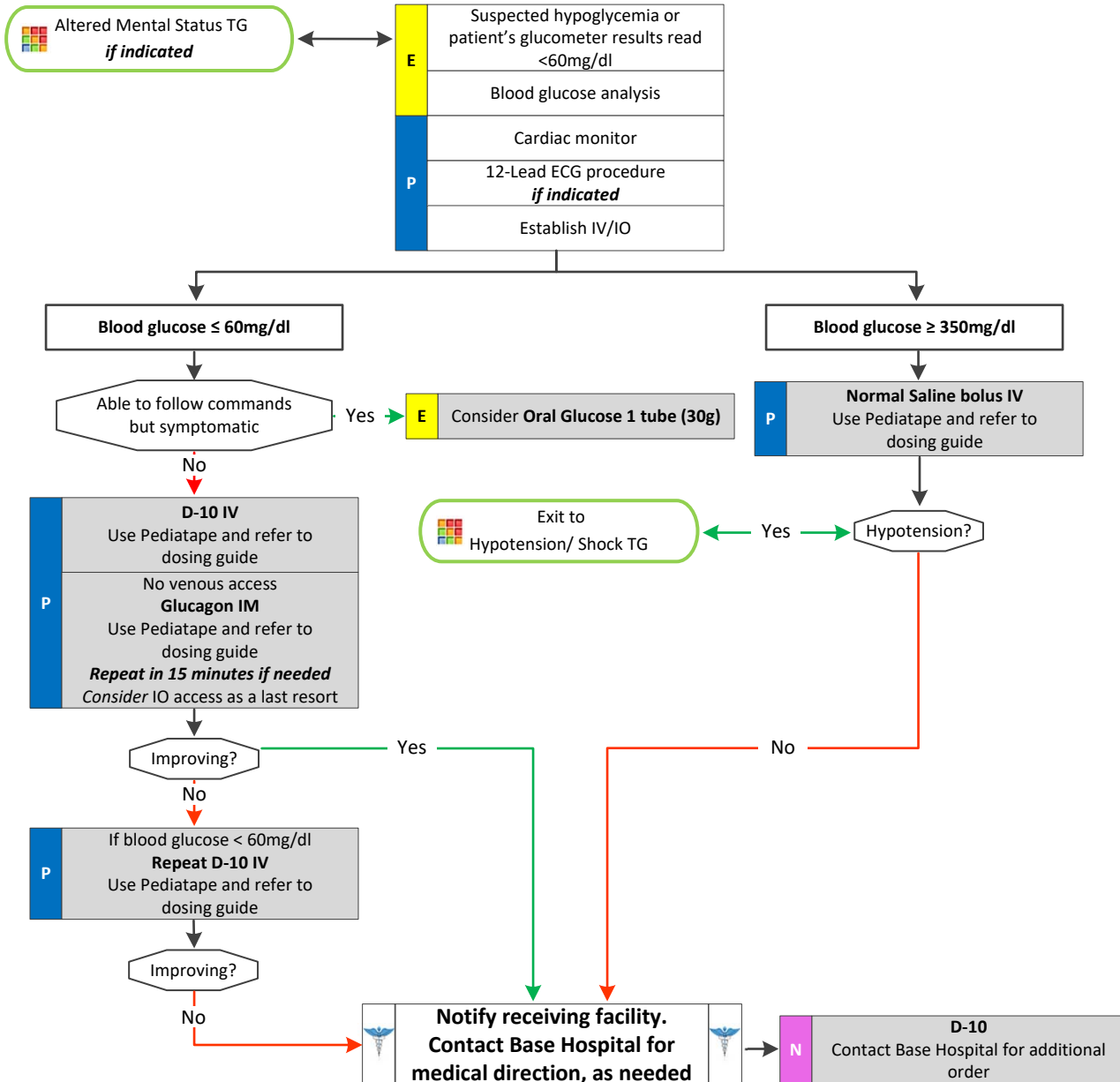
- Past medical history
- Medications
- Recent blood glucose check
- Last meal

Signs and Symptoms

- Altered mental status
- Combative or irritable
- Diaphoresis
- Seizure
- Abdominal pain
- Nausea or vomiting
- Weakness
- Dehydration
- Deep or rapid breathing

Differential

- Alcohol or drug use
- Toxic ingestion
- Trauma or head injury
- Seizure
- Stroke
- Altered baseline mental status



Pearls

- Do not administer oral glucose to patients that are not able to swallow or protect their airway.
- Patients with prolonged hypoglycemia may not respond to Glucagon.

