

## Introduction

Contra Costa Environmental Health has been designated as the Local Enforcement Agency (LEA) for solid waste by the California Integrated Waste Management Board (CIWMB). The goal of the LEA is to protect the public health and safety of the citizens of Contra Costa County through the enforcement of minimum standards for the collection, handling, storage, and disposal of residential, commercial and industrial solid waste for the protection of air, water and land from pollution and nuisance.

## Definitions

The LEA issues permits to and regulates all solid waste facilities and operations within the county. Contra Costa County has three active landfills, four transfer stations, and one compost facility. Other facilities under our jurisdiction include a soil remediation facility, and a few closed, illegal, and abandoned landfills.



**Landfill** — A disposal facility that accepts solid waste for land disposal. Solid waste (garbage, trash and wastes not recycled) is placed at the site, compacted, and covered daily with a suitable cover material — normally soil.

**Transfer Station** — A facility that receives solid waste for the purpose of storing, handling and processing the waste prior to transferring the waste to another solid waste operation or facility.

**Compost Facility/Operation** — A facility or operation that is operated for the purpose of producing compost. Examples of compost facilities are: green material (>1000 cubic yards), animal material, sewage sludge, and mixed solid waste composting facilities. Examples of compost operations are: research operations, agricultural material operations, and green material operation (<1000 cubic yards).

## Enforcement Authority

The LEA is designated by the County and certified by the CIWMB to implement delegated CIWMB programs and local enactments. The LEA is authorized to enforce the solid waste laws and regulations established by legislation and the CIWMB as well as local enactments. These regulations are:

- Public Resources Code, Division 30
- California Code of Regulations Title 14, Divisions 6 and 7 Title 27, Division 2
- Subtitle D (Federal Regulations)



## Permits

All solid waste facilities are required to obtain permits from the LEA and CIWMB. The permitting process includes obtaining permits from various agencies including the LEA and CIWMB, the Regional Water Quality Control Board, the County Community Development Department, the Department of Toxic Substance Control, and the Air Resources Control Board to name a few.



Permitting usually begins by determining if a project exists under the California Environmental Quality Act (CEQA). This environmental review or document is then the basis for obtaining a land use permit, a solid waste facility permit, waste discharge requirements, etc.

The type of solid waste facility permit issued by the LEA depends on the type of facility or operation, the tons or cubic yards of material handled, and permitting specifics provided in the regulations.

## Facilities in Contra Costa County

Permitted solid waste facilities currently operating in Contra Costa County are:



### **Acme Landfill**

950 Waterbird Way, Martinez. Accepts only green and wood waste, construction and demolition waste, and white metals (appliances). Phone: (925) 228-7099.

### **City of Brentwood Solid Waste Transfer Station**

This Brentwood facility is not open to the public. Phone: (925) 634-0955.

### **Contra Costa Transfer and Recovery System**

951 Waterbird Way, Martinez. Accepts general solid waste from the public. Phone: (925) 313-8900.

### **Keller Canyon Landfill**

This Pittsburg facility is not open to the public. Accepts green and wood waste, construction and demolition waste, and industrial and special wastes from commercial generators. Phone: (925) 458-9800.

### **Pittsburg Transfer Station and Recycling Center**

1300 Loveridge Road, Pittsburg. Accepts general solid waste from the public. Contact the City of Pittsburg LEA for more information. Phone: (925) 473-0180.

### **West Contra Costa Resource Recovery — Central Processing Facility**

This Richmond facility is not open to the public. The Buy Back Center is open to the public. The household hazardous waste collection facility is open to the public by appointment. Phone: (510) 412-4500.

### **West Contra Costa Sanitary Landfill**

Parr Boulevard, Richmond. The only landfill in the county that accepts general solid wastes from the public. Phone: (510) 233-8810.

### **West Contra Costa Sanitary Landfill (WCCSL) Compost Facility**

Parr Boulevard. Accepts clean green material for composting from the public. Phone: (510) 233-8810.

# Resources

The following list of phone numbers will assist you in contacting the companies and agencies involved with solid waste in Contra Costa County.

## GARBAGE SERVICE

Bay View Refuse & Recycling—Kensington Phone: (510) 237-4614

Brentwood Phone: (925) 516-5415

East Bay Sanitary—El Cerrito Phone: (510) 237-4321

East County—Bethel Island, Byron, Concord, Discovery Bay, Knightsen, Oakley, Pittsburg, Shore Acres Phone: (925) 682-9113

Pleasant Hill Bayshore Disposal—Alamo, Antioch, Baypoint, Canyon, Clayton, Clyde, Danville, Diablo, Lafayette, Martinez, Moraga, Mountain View, Orinda, Pacheco, Pleasant Hill, Rheem Valley, Vine Hill, Walnut Creek Phone: (925) 685-4711

Richmond Sanitary Service—Crockett, El Sobrante, Hercules, Pinole, Port Costa, Richmond, Rodeo, San Pablo Phone: (510) 262-1600

## OTHER AGENCIES

California Integrated Waste Management Board (916) 341-6000

Bay Area Regional Water Quality Control Board (510) 622-2300

Central Valley Regional Water Quality Control Board (916) 255-3000

Department of Toxic Substances Control—Hazardous Waste Violations (800) 698-6942

Contra Costa Community Development Department (925) 646-1600

Contra Costa County Hazardous Materials Program (925) 646-2286

Contra Costa Environmental Health/Code Enforcement and LEA (925) 646-5225

Central Contra Costa Solid Waste Authority (925) 906-1801

West Contra Costa Integrated Waste Management Authority (510) 215-3125

City of Pittsburg LEA (925) 252-4110

Pollution Prevention (800) 229-9473

Contra Costa Mosquito and Vector Control District (925) 685-9301

Central Contra Costa Sanitary District—Household Hazardous Waste (800) 646-1431

Delta Diablo—Household Hazardous Waste Facility (925) 778-4040

West County Resource Recovery, by appointment (510) 412-4500

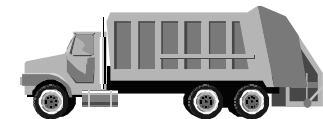
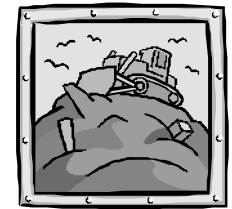
City Planning Departments—please refer to phone book/govt. listing

**Contra Costa Environmental Health**  
2120 Diamond Blvd., Suite 200  
Concord, CA 94520



**Contra Costa  
Environmental Health**

**LOCAL ENFORCEMENT  
AGENCY FOR  
SOLID WASTE**



**Contra Costa Environmental Health**  
2120 Diamond Blvd, Suite 200  
Concord, California 94520  
Phone (925) 646-5225  
Fax (925) 646-5130  
[www.cocoeh.org](http://www.cocoeh.org)