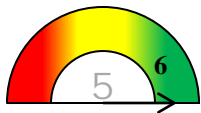


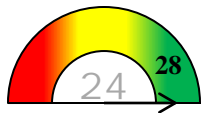
Progress Towards Achieving Inclusion Goals for this Year to Date (as of 12/31/2010)

(these targets and numbers are shown as progress to date, not as a quarterly report)

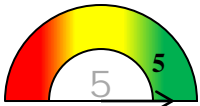
Numbers in grey are the target numbers and/or percentages; Red=Below 25%; Red/yellow=25-44%; Yellow=45-55%; Yellow/green=56-75% and Green=76%+ of target met



Cultural Competency Trainings Offered to CCMH Staff and Contract Providers



of Inclusion Initiative eNewsletters Produced

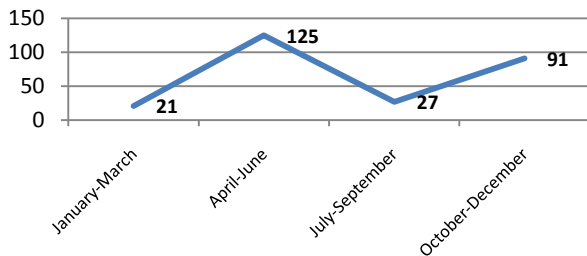


times the Inclusion Initiative Appeared in Contra Costa Mental Health Director's Newsletter



of Clinics and Community-Based Providers That Completed the Cultural Competency Survey Tool

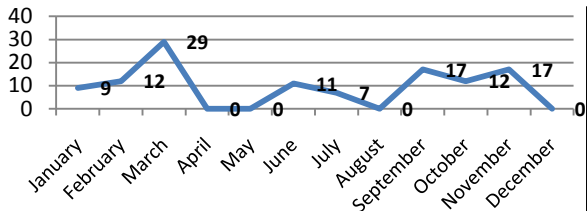
Persons Trained in LGBT Cultural Competence (2010)



Number of Persons Trained in LGBT Cultural Competency this Year to Date (as of 12/31/2010)

264

Providers Who Attended REALISM Data Collection Training (2010)



Number of Personal Navigators

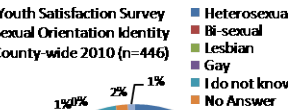
15

Number of Staff Trained in REALISM Data Collection this Year to Date (as of 12/31/2010)

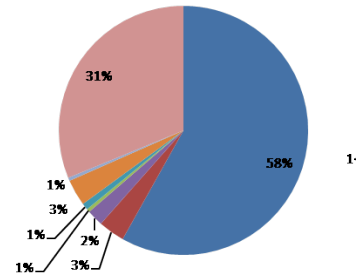
114

Consumer Satisfaction Survey Sexual Orientation and Gender Identity Demographics

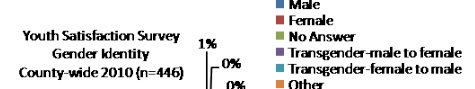
Youth Satisfaction Survey Sexual Orientation Identity County-wide 2010 (n=446)



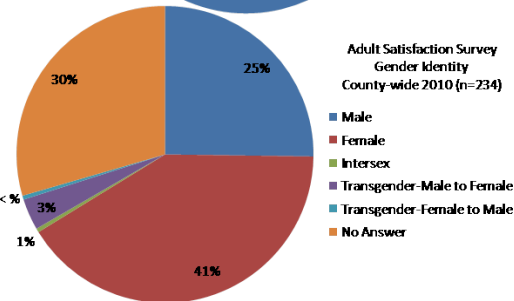
Adult Satisfaction Survey Sexual Orientation Identity County-wide 2010 (n=234)



Youth Satisfaction Survey Gender Identity County-wide 2010 (n=446)



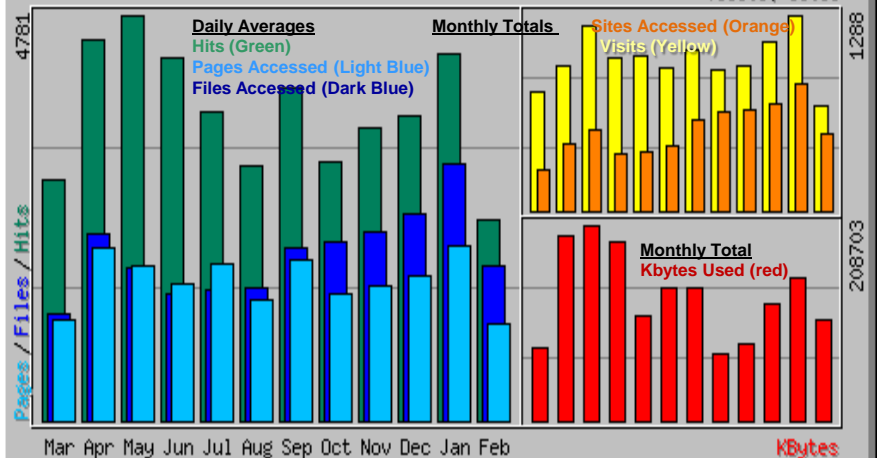
Adult Satisfaction Survey Gender Identity County-wide 2010 (n=234)



Local Lesbian, Gay, Bisexual, Transgender, Queer, Questioning, Intersex and 2-Spirit (LGBTQQI2-S) Resources Website Statistics.

www.EastBayPride.com

Usage summary for eastbaypride.sf-eastbay-lgbtq-resources.org / Sites



The Contra Costa Mental Health Inclusion Initiative Quarterly Dashboard For October through December 2010

