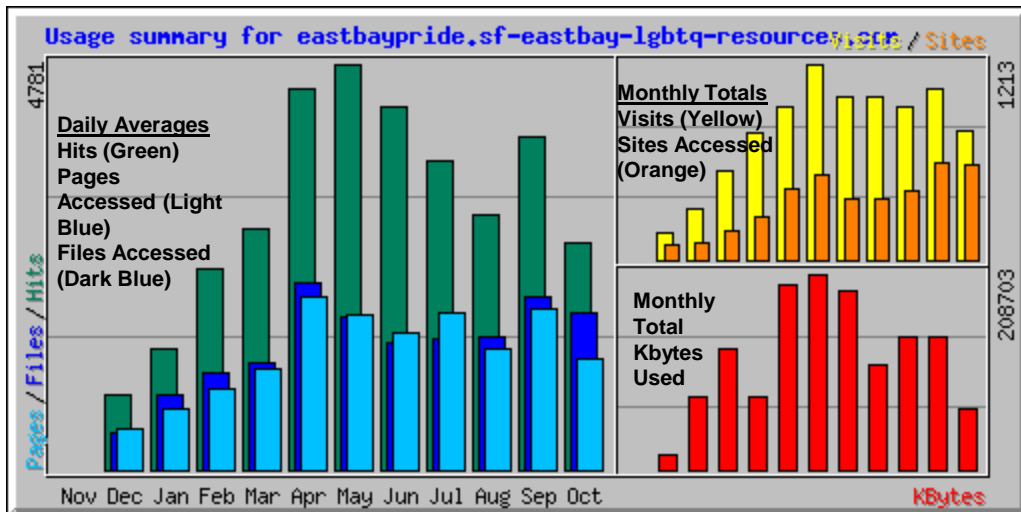


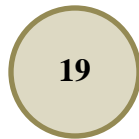
Local Lesbian, Gay, Bisexual, Transgender, Queer, Questioning, Intersex and 2-Spirit (LGBTQQI2-S) Resources Website Statistics.

www.EastBayPride.com



Number of Inclusion Initiative eNewsletter Produced Year to Date (as of 10/1/2010)

Number of [eNewsletters](#) Produced this Quarter



The Inclusion Initiative Appeared in Contra Costa Mental Health Director's [Newsletter](#) in:

- February 2010
- May 2010
- July 2010
- September 2010

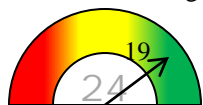
Progress Towards Achieving Three Inclusion [Goals](#) for this Year to Date (as of 10/1/2010)

(these targets and numbers are shown as progress to date, not as a quarterly report)

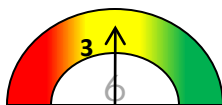
Numbers in grey are the target numbers and/or percentages; Red=Below 25%; Red/yellow=25-44%; Yellow=45-55%; Yellow/green=56-75% and Green=76%+ of target met



Cultural Competency Trainings Offered to CCMH Staff and Contract Providers

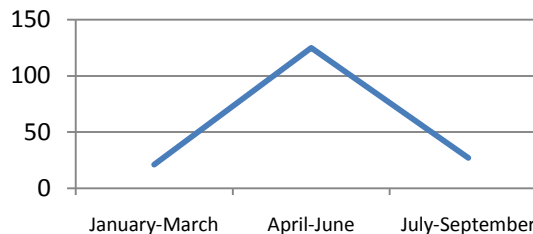


of Inclusion Initiative eNewsletters Produced



of Clinics and Community-Based Providers That Completed the [Cultural Competency Survey Tool](#)

Persons Trained in LGBT Cultural Competence



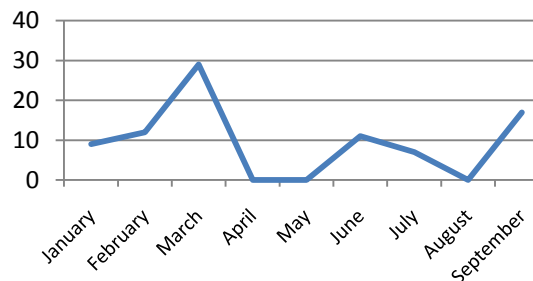
Number of Persons Trained in [LGBT Cultural Competency](#) this Year to Date (as of 10/1/2010)



[Number of Personal Navigators](#)



Providers Who Attended REALISM Data Collection Training (2010)



Number of Staff Trained in REALISM Data Collection this Year to Date (as of 10/1/2010)



The Contra Costa Mental Health [Inclusion Initiative](#) Quarterly Dashboard For July through September 2010



Note, Contra Costa Mental Health Plan now collects gender identity and sexual orientation using its [Consumer Satisfaction Survey](#).